



# ICE TIMES

December  
2011

Washington County Youth Hockey Association

[www.wcyha.org](http://www.wcyha.org)

## INSIDE THIS ISSUE:

Calendar of Events	1
What's happening at KMIC	2
Pre-Hockey Registration	3
Wish List / Information	4
President and Coaching Dir. Letters	5-7
Ice Bears information	8
Bombers information	9
Hockey Haven / Angee b'z	10
Team work week schedule	11
Try Hockey for Free Day	12
Planet hockey camp information	13
Thank you	14
Construction photos	15-16
Weekly ice Schedule	17
Board members	18

## **Family Fundraising Wrap Up**

Family fundraising obligations are coming due in the next couple weeks.

For those who still have to raise the \$250 in profit per skater, we have the following options:

Seroogy Candy Bars - In Julie's office

Entertainment Books - In Julie's office

Online Fundraiser\*: Magazines, Media, etc... <http://www.efundraisingonline.com/WCYHAICE/>

\*(in order to get credit we have to raise \$20 in profit per month)

Thank you,  
Tracy Braun-McCardle

## Calendar of Events

### **December 9th, 10th and 11th**

PeeWee Tournament

### **December 19th —7:00 pm**

Board meeting— Multi Purpose room

### **December 27th, 28th and 29th—**

Ice Bears JV Tournament

### **December 30th, 31st Jan 1st**

Bantam Tournament

**Please check website calendar  
for any changes**

## KMIC OFFICE HOURS

### MONDAY

10:00AM – Close

Office Manager: 10:00AM – 3:30PM

### TUESDAY

10:00AM – 5:00PM

Office Manager: 1:00PM – 5:00PM

### WEDNESDAY

10:00AM – Close

Office Manager: 10:00AM – 3:30PM

### THURSDAY

1:00PM – 5:00PM

Office Manager: 1:00PM – 5:00PM

### FRIDAY

10:00AM – 3:00PM

Office Manager: Off

### WEEKEND OFFICE HOURS

VARIOUS HOURS DEPENDING ON ICE SCHEDULE

In the absence of Julie, the Office Manager,  
please contact Craig, the Rink Manager.

Craig Petersen@414-418-5795 or Julie Fahler@414-688-0484

## WHAT'S HAPPENING AT KMIC

### Pre-Hockey

We have 42 kids signed up for the first session of pre-hockey this year! Let's welcome these new families to our association!

Next session starts in **January** – registration form located on page 4 and on our website.



**Claim your Dibs!**

**Posted on the**

**WCYHA**

**website**

**wcyha.org**



**Join us on Facebook**

**Kettle Moraine Ice Center**

### **VOLUNTEER WORK NIGHTS**

Every Monday and Wednesday night is Volunteer night.

Please see Craig.

**THANK YOU FOR ALL YOUR  
HELP!**

### **PUBLIC SKATE HOURS** **Monday, Wednesday and**

**Saturday**

**1:00pm-3:00pm**

**Sunday**

**2:00pm-4:00pm**

# Kettle Moraine ICE CENTER

## Pre-Hockey Registration

Our Pre-Hockey program focuses on the basic skills needed to prepare players for Youth Hockey. Boys and girls ages 4 to 12 are welcome. Participants should be able to skate forward prior to enrollment. In addition to Pre-Hockey, we encourage skaters to come to Public Skate (free of charge during time of enrollment).

**January Session:** Sundays 1:00 – 2:00pm: 1/8, 1/15, 1/22, 2/12, 2/26, 3/25, **Game Day 4/1/12**

**April Session:** Sundays 1:00 – 2:00pm: 4/8, 4/15, 4/29, 5/6, 5/13, 5/20, **Game Day 5/27/12**

Skater's Name \_\_\_\_\_

Skater's Date of Birth \_\_\_\_\_

Parent's Name \_\_\_\_\_

Phone Number \_\_\_\_\_

Address \_\_\_\_\_

City, State, Zip \_\_\_\_\_

Email \_\_\_\_\_

Alternate Contact Info \_\_\_\_\_

## Liability Waiver

As hockey is a contact sport, I hereby release the Kettle Moraine Ice Center, Washington County Youth Hockey Association, Instructors and all representatives from liability which may arise as a result of accident, injury or loss during the Pre-Hockey program. I also testify to having health insurance for the above named participant. By signing this form, I take full responsibility for any accident, injury or loss while on the property of Kettle Moraine Ice Center.

Signature \_\_\_\_\_

Date \_\_\_\_\_

**Cost: \$65 for seven week session. *SIGN UP NOW FOR BOTH SESSIONS FOR \$120***  
**Limited sets of rental equipment available for \$20 and a \$150 returnable deposit. (\$170 total)**  
**Payment: Check # \_\_\_\_\_ Cash \_\_\_\_\_**

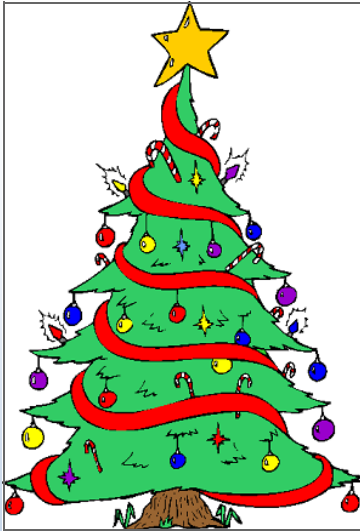
### **Attention Parents wanting to help . . .**

**Please let us know if you would like to help out on the ice.**

**Skating/coaching experience, a helmet, skates, stick and gloves required.**

**Name \_\_\_\_\_ Phone \_\_\_\_\_**

## KMIC Wish Tree



### In the downstairs lobby is the KMIC Holiday Wish Tree

Remove an ornament from the tree, it has a specific item that is needed at the rink listed on the back. The items are small and some larger. "If you are able to play Santa's helper" this holiday season, please choose one of the ornaments from the tree. Place the item back under the tree or return it to the office with Santa's helpers name on it. Thank you so much and have a very merry holiday season!

Thank you Rick Solomon for the rope stand and  
thank you to the Foss family for donating the dry erase markers!!

## Team/Manager

**Mailboxes are located in the new  
skate rental room.**

---

PLAYER PICTURES THAT HAVEN'T BEEN PICKED  
UP ARE IN THE MAIN OFFICE. PLEASE SEE  
JULIE TO GET YOUR SKATER'S PICTURES.  
THANK YOU

## Letter from The President

I hope this newsletter finds you, your skater(s) and your family enjoying the hockey season.

As you all know, the growth of our organization over the past couple of years and last season's successes resulted in WAHA moving us up to Division 2 for this season. While competition at Division 2 is tougher, the move is most certainly a compliment for our organization; and it reinforces that our players are working hard and our coaches are developing the skaters to be the best that they can be. Wins are great; but I think our coaches would agree that they would rather have a positive learning experience and player development in a loss, than having our players with bad habits or poor sportsmanship in a win. Keep this in mind in the stands, and in your drives home from games with your skaters.

The holidays are times to give thanks for all of the things that we have and the good times that we've had. So with that, a couple of notes of thanks:

-First of all.....a huge **THANK YOU to Jennifer Prange (our former Bookkeeper)** for her 4+ years of service to our organization. Jen played a key role in the maintenance of our financials, maintenance of the Cradle Roll, assisting with the registration process, and with other functions of our business office. She recently offered to do our monthly Newsletter; and she's responsible for the development of this issue. Please take the time to thank her for her service.

-Secondly.....a huge **THANK YOU to Steve Nelson – Bantam A Head Coach.** Steve has been instrumental in securing a date with our Bantam A team to play the WI Warriors Sled Hockey team on Friday, January 20<sup>th</sup>. For those of you who aren't familiar with them, the Warriors are a hockey team made up of disabled athletes, who sit in specially designed sleds that sit on top of two hockey skate blades. There are two sticks for each player instead of one and the sticks have metal pics on the butt end for players to propel. Goalies wear basically the same equipment but do make modifications to the glove. Metal picks are sewn into the backside to allow the goalie to maneuver. Our goal is to be able to raise enough money with this event to help purchase one sled for the team for next season. Watch for more details on the event and the fundraising effort being undertaken by the Bantam team.

-Thirdly.....a big **THANK YOU is owed to Rick Solomon** for his continued efforts with our Building Project. Rick has been instrumental in seeing a number of things through – most recently installing the storage racks in the new equipment room, as well as installing new storage racks in the upper level concessions storage room.

Last, but certainly not least.....**THANK YOU to Eric and Angie Breckenridge** for their time and efforts in securing some welcomed furnishing additions to our rink. The Breck's found some furniture items that St. Joe's/Froedert had in storage and secured donations of those items through the Corporate Office. The chairs that you see in the upstairs lobby, the tables that are in the multi-purpose room, the cabinets that are downstairs in the storage rooms.....all of those have been donated to us for use in our newly expanded facility.

Thanks to Eric and Angie for securing these, and for organizing the pick-up and delivery of those items!

Please take the time to thank these individuals at your next opportunity.

Every now and then, we need to take a step back and catch our breath. We really do have a lot to be thankful for.....

From my family to yours.....our best wishes for a very Merry Christmas; and a safe & enjoyable New Years!

Todd

## Letter from our Coaching Director

Greetings:

I hope that everyone is enjoying the 2011-2012 hockey season. I have been very fortunate to spend many hours next to so many great players, coaches, and members at WCYHA this hockey season. The passion, commitment, and support that our members provide to our players is something we should all be very proud of. I feel that WCYHA is well on its way towards becoming a premier hockey program in the state of Wisconsin. We all should be very proud to represent WCYHA and enjoy watching our players and coaches to continue to develop.

Player Development starts and ends with the fundamentals. Our players are very curious and intelligent. They want to become better, and the stronger they become, the greater their self esteem, which leads to more confidence and FUN. They are smart enough to know that in order to get better; they need to work at it. If they are willing to put in the time, we will make certain that they develop and enjoy their youth hockey experience. From our off-ice trainings and chalk talks that our teams participate in, to our USA Hockey ADM program, to our on ice training with all of our committed coaches, we want to make certain that we provide the best value possible for our membership. There will always be challenges and opportunities throughout a season. I have an open door policy and enjoy hearing positive and not positive opportunities for improvement. If you have an idea, thought, concern, or just want to talk, please don't ever hesitate to contact me to discuss. I have heard from so many of you so far this season and I appreciate your recommendations, thoughts, and feelings towards your player(s) and

WCYHA. We have many great things to be proud of and the only way to continue to improve is to have open communication. Player Development is more than just a game

or practice; it's about the experience for the entire family. From the pizza party after a game or at a tournament, to the out of town weekend, this should be an enjoyable experience for everyone. You never know when your child will have "the best year ever". Our goal is to create that atmosphere each and every season.

In closing, I encourage everyone to continue to enjoy the season to the fullest. From the car ride to practice, to the post game pat on the back, enjoy every minute of it and

continue to aid in the overall development of our players and WCYHA.

I look forward to seeing everyone around the rink.

Happy Holidays!

Eddie MacDonald

**WCYHA**

**Director of Player Development**







## **ICE BEARS UPCOMING GAMES**

**12/16 7:00 PM**

**12/27 7:00 PM**

**12/27—28—29 JV Tourney**

**12/21 Varsity 8:15 PM**





**In appreciation for your ongoing support the West Bend Bomber's management announces:**

**Free admission for all Washington County Youth Hockey Families for the entire season. Wear your ICE jersey and you, your family and a friend get in for FREE.**

Building capacity is limited

Seating is first come first serve



**HOCKEY HAVEN AT THE KETTLE MORaine ICE CENTER IS  
OPEN FOR BUSINESS FOR ALL YOUR HOCKEY NEEDS.**

**SKATE SHARPENING  
JERSEYS/SOCKS  
EQUIPMENT  
ICE SPIRIT WEAR**

**Monday-Friday 3:00PM -8:00PM**

**Saturday 10:00AM -5:00PM**

**Sunday 10:00AM -4:00PM**

Hours will be extended during tournament weekends.



Angee b'z is now  
open daily.

# TEAM WORK WEEK SCHEDULE

Week	Team 1	Team 2	Tourney
Dec 5 <sup>th</sup>	PW A	PW BG	Pee Wee A & B
Dec 12 <sup>th</sup>	PW BB	ADMW	
Dec 19 <sup>th</sup>	SQ B	ADMR	
Dec 26 <sup>th</sup>	BT A		Bantam Shootout
Jan 2 <sup>nd</sup>	SQ A	ADMB	
Jan 9 <sup>th</sup>	SQ CG	ADMW	
Jan 16 <sup>th</sup>	SQ CB	ADMR	
Jan 23 <sup>rd</sup>	ADMG	SQ B	ADM Jamboree
Jan 30 <sup>th</sup>	BT A	SQ CB	Playdowns
Feb 6 <sup>th</sup>	PW BG	ADMB	
Feb 13 <sup>th</sup>	SQ A	SQ B	Squirt A & B
Feb 20 <sup>th</sup>	PW A	ADMW	
Feb 27 <sup>th</sup>	PW BB	PW BG	State Bantam & Squirt
Mar 5 <sup>th</sup>	SQ CG	ADMG	State Pee Wees
Mar 12 <sup>th</sup>	SQ A	SQ B	3 on 3
Mar 19 <sup>th</sup>	SQ CB	PW A	
Mar 26 <sup>th</sup>	SQ CG	PW BB	
Apr 2 <sup>nd</sup>	BT A	ADMG	

## Try hockey for free day

Thank you to all the volunteers for making this day a success



# Planet Hockey Camp at Kettle Moraine Ice Center

Planet Hockey is coming to Kettle Moraine Ice Center, August 6-10, 2012 and is offering a Special Early Registration Discount and Bonus to all West Bend hockey families:

Early Registration DISCOUNT & BONUS

Your Exclusive Camp Discount - \$100

TOTAL Player Development Camp

August 6-10, 2012

Register with your Host Discount



- Early Registration Discount & Bonus Code: 169-233-1221900112031990
- \$99 Early Registration option expires on January 15, 2012. Discount expires when camp fills.
- Copy and paste the discount code into the 'Discount Code' space on the last page (payment page) of your online registration.
- Goaltenders- do not enter above discount code. You will automatically receive a 50% discount (off of full tuition).
- Discounts can not be combined. Largest discount always applies.
- Limited enrollment...register today
- For camp details and/or to Register - [click here](#)

## Special Camp Features

- Total Player Development Camp - to include Power skating, stickhandling, passing, scoring, team play, positional play, small area games, body contact, puck protection, agility, speed, lateral mobility, quickness, certified staff and more. Plus, each player receives our exclusive 16 page player profile/report card & training DVD, free jersey & more...
- Early Registration BONUS: Lock down your spot by January 15, 2012 for only \$99 (your balance is not due until 45 days prior to camp)...and you will still receive your discount.
- Small Games, European Flow Drills and Innovative skills training
- Taught by Planet Hockey Certified Instructors
- Testimonials
- Limited Space, register today

## Other Planet Hockey Summer Programs

- 7 Day Resident Hockey/Adventure Camps - Breckenridge, CO & Jay Peak, VT
- European Hockey Summit '12 - Ljubljana, Slovenia July 22-30, 2012 & Stockholm, Sweden August 5-13, 2012
- Other 2012 USA Planet Hockey Summer Hockey Camps
- Planet Hockey Website- [learn more about Planet Hockey](#)

## HURRY...CAMPS FILL QUICKLY

Planet Hockey limits group sizes, so REGISTER HERE to ensure your spot and discount in the upcoming West Bend, WI Planet Hockey SUPER Skills Summer Camp. Bonus - register prior to January 15th to reserve your camp spot for only \$99 (balance due 45 days before camp) and you still receive your exclusive camp discount.

See you at Planet Hockey this summer!

Chris Kawano

Planet Hockey, Inc.



## Thank you - Thank you

Thank you Ice Bears for helping us move the furniture into our new office.



---

## Thank you Tim Holtz for fixing our sign.

Now that Tim Holtz fixed up our outside sign, I am looking for a new volunteer to update the sign once a week.

Please let me know if you would be interested in helping!

Thanks,

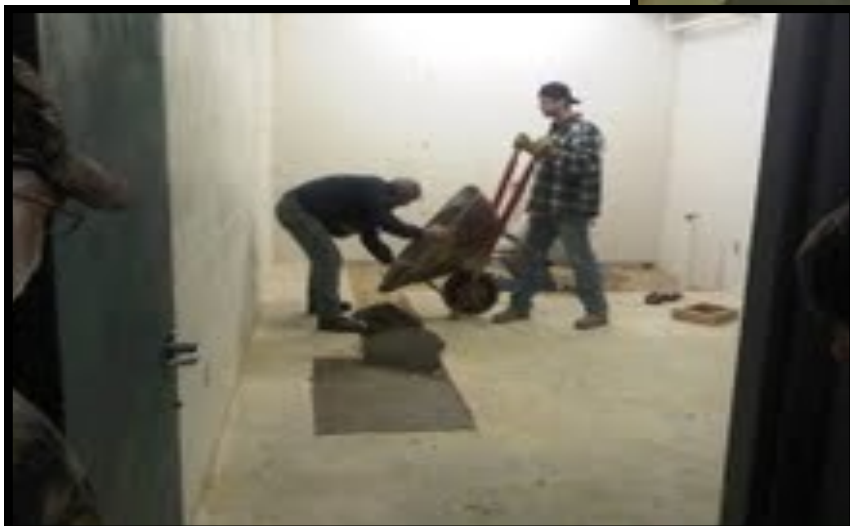
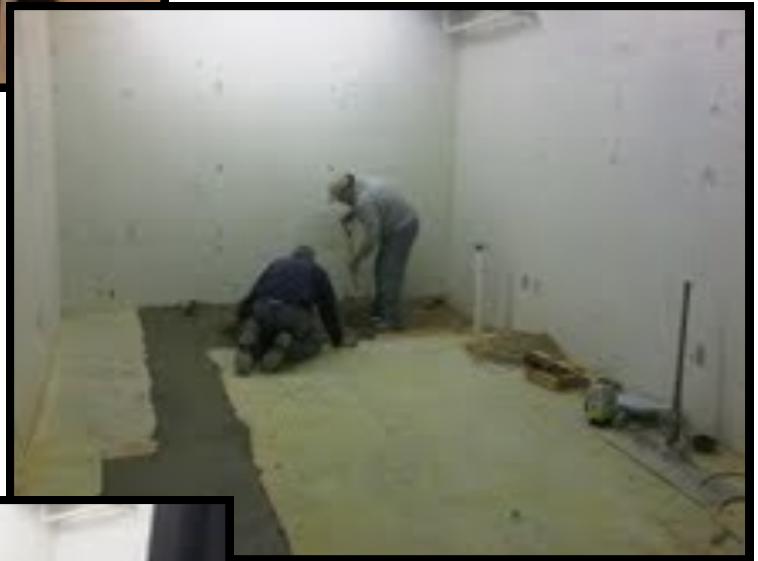
Craig



Thank you Todd and Jen Prange for donating 3—42" TV's for the fitness center and thank you Angie Breckenridge for all the furniture you had donated.

# Construction update

Finishing the last of the interior concrete!







Rick prepping for asphalt



# POST TRY-OUT SCHEDULE

## 2011 - 2012 Final Post-Tryout Schedule

8/5/2011

Monday	Tuesday	Wednesday	Thursday
1:00 - 3:00pm Public Skate	6:00 - 7:00am Adult Open	1:00 - 3:00pm Public Skate	6:00 - 7:00am FS Buy On
3:30 - 4:45pm Ice Bears	3:30 - 4:45pm Ice Bears	3:10 - 4:10pm FS Buy On	3:30 - 4:40pm Ice Bears
4:55 - 6:10pm Ice Bears	4:55 - 6:10pm Ice Bears	4:10 - 6:10pm KMFSC	4:50 - 6:00pm Ice Bears
6:20 - 7:20pm SQC1/SQC2	6:20 - 7:20pm SQA/SQB	6:20 - 7:20pm SQC1/SQC2	6:10 - 7:10pm ADM
7:30 - 8:30pm PWB1/PWB2	7:30 - 8:30pm PWA/Bantam A	7:30 - 8:30pm PWB1/PWB2	7:20 - 8:20pm SQA/SQB
8:40 - 9:40pm Adult Novice	8:30 - 9:00pm Bantam A	8:40 - 10:00pm Ice Bears	8:30 - 9:30pm PWA/Bantam A
9:50 - 10:50pm Adult Novice	9:10 - 11:10pm Bombers	10:00 - 11:00pm Ice Maintenance	9:30 - 10:00pm Bantam A
			10:10 - 11:10pm Adult Open
Thank you.			
Friday	Saturday	Sunday	Schedule for:
6:00 - 7:00am Adult Open	7:00 - 12:45pm Games	7:00 - 12:45pm Games	Pre Hockey
10:00 - 3:00pm Ice Maintenance	1:00 - 3:00pm Public Skate	1:00 - 2:00pm Pre Hockey	ADM - full ice
3:00 - 5:00pm FS Buy On	3:15 - 10:00pm Games	2:00 - 4:00pm Public Skate	4 - squirt
5:00 - 6:00pm KMFSC		4:15 - 6:45pm KMFSC	3 - peewee
6:10 - 7:10pm ADM		7:00 - 11:00pm Adult League	1 - bantam
			1 - Pre-Hockey



# WCYHA Board

<b>Office</b>	<b>Name</b>	<b>Email</b>	<b>Term</b>
<i>President *</i>	<b>Todd Rusniak</b>	<a href="mailto:President@wcyha.org">President@wcyha.org</a>	March 2011 - March 2013
<i>Vice-President *</i>	<b>Doug Pickett</b>	<a href="mailto:Vice-President@wcyha.org">Vice-President@wcyha.org</a>	March 2011 - March 2013
<i>Treasurer *</i>	<b>Mike Hester</b>	<a href="mailto:Treasurer@wcyha.org">Treasurer@wcyha.org</a>	March 2010 - March 2012
<i>Secretary *</i>	<b>Russ Wanta</b>	<a href="mailto:Secretary@wcyha.org">Secretary@wcyha.org</a>	March 2011 - March 2013
<i>Past President *</i>	<b>Michael Leonhard</b>	<a href="mailto:Past_President@wcyha.org">Past_President@wcyha.org</a>	March 2011 - March 2013
<i>Tournament Director *</i>	<b>Jeremy Grannan</b>	<a href="mailto:Tournament_Director@wcyha.org">Tournament_Director@wcyha.org</a>	March 2011 - March 2013
<i>Director of Coaching*</i>	<b>Eddie MacDonald</b>	<a href="mailto:Coaches@wcyha.org">Coaches@wcyha.org</a>	March 2011 - March 2013
<i>Director of Community Fundraising *</i>	<b>Marilyn Herzberg</b>	<a href="mailto:community_fundraising@wcyha.org">community_fundraising@wcyha.org</a>	March 2011 - March 2013
<i>Director of Player Development *</i>	<b>Eddie MacDonald</b>	<a href="mailto:player_development@wcyha.org">player_development@wcyha.org</a>	March 2011 - March 2013
<i>Maintenance Coordinator</i>	<b>Bryan Pfaff</b>	<a href="mailto:Rink_Maintenance@wcyha.org">Rink_Maintenance@wcyha.org</a>	March 2010 - March 2012
<i>Volunteer Coordinator</i>	<b>Deb McClarran</b>	<a href="mailto:Volunteer_Coordinator@wcyha.org">Volunteer_Coordinator@wcyha.org</a>	March 2010 - March 2013
<i>Referee Coordinator</i>	<b>Dennis Opalacz</b>	<a href="mailto:Referee_Coordinator@wcyha.org">Referee_Coordinator@wcyha.org</a>	March 2010 - March 2013
<i>Internal Fundraising Coordinator</i>	<b>Tracy McCardle</b>	<a href="mailto:Fundraiser_I@wcyha.org">Fundraiser_I@wcyha.org</a>	March 2011 - March 2013
<i>Zamboni Coordinator</i>	<b>Jim Meyers</b>	<a href="mailto:Zamboni_Coordinator@wcyha.org">Zamboni_Coordinator@wcyha.org</a>	March 2011 - March 2013
			March 2011 - March 2013

*Denotes position having voting rights at the Board level.*

*Please contact **Todd Rusniak** if interested in filling any open board position.*