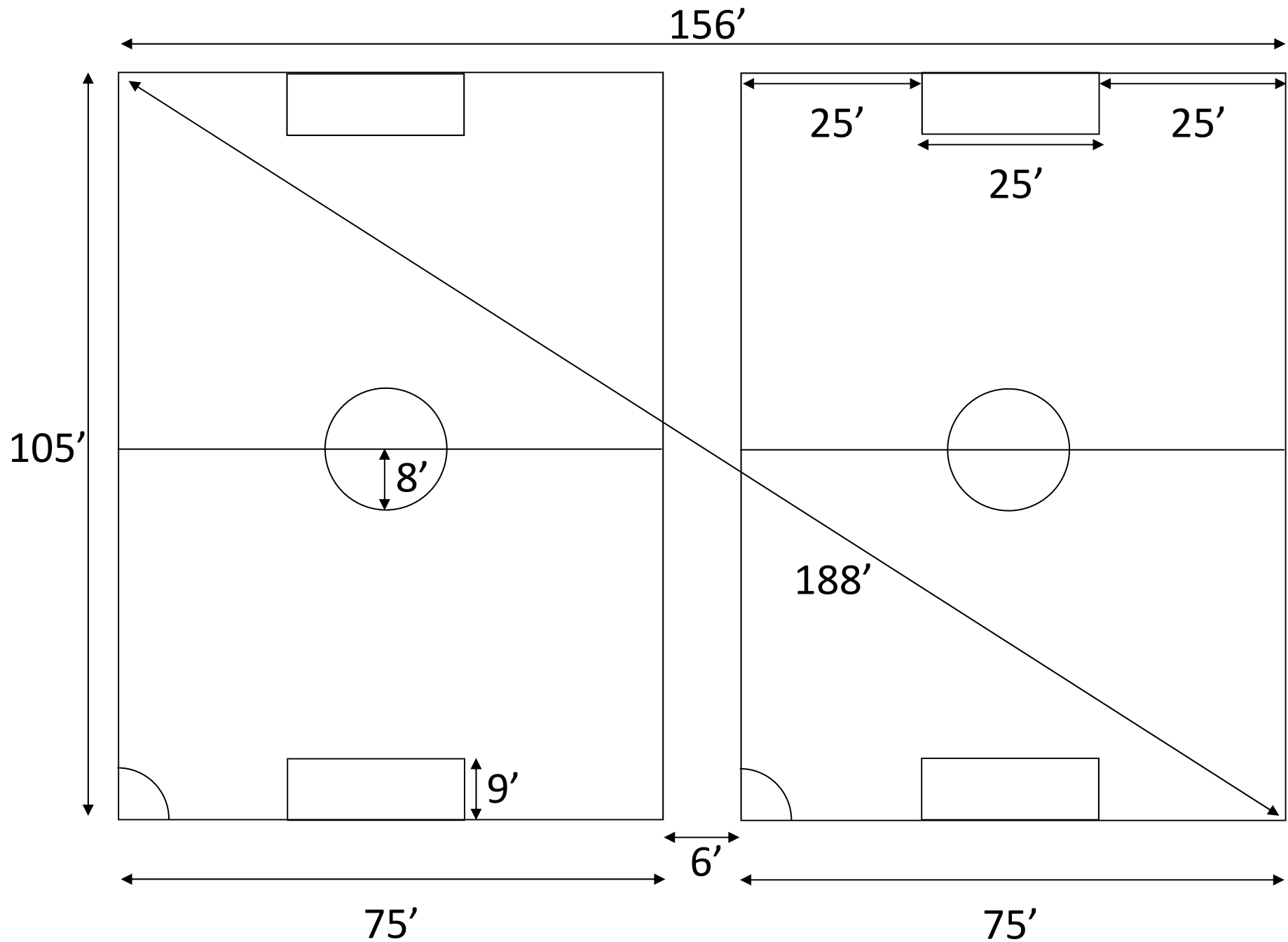
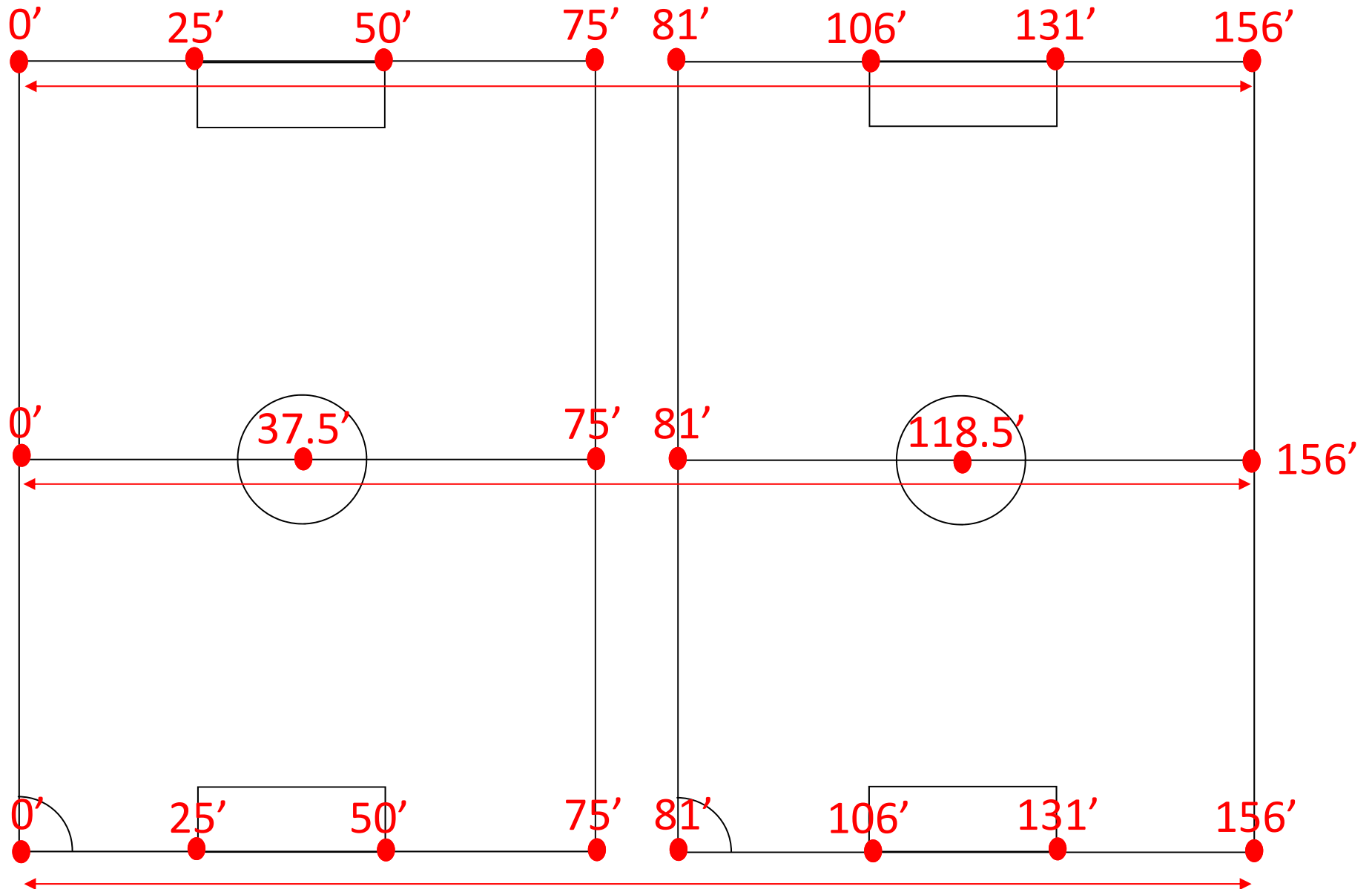


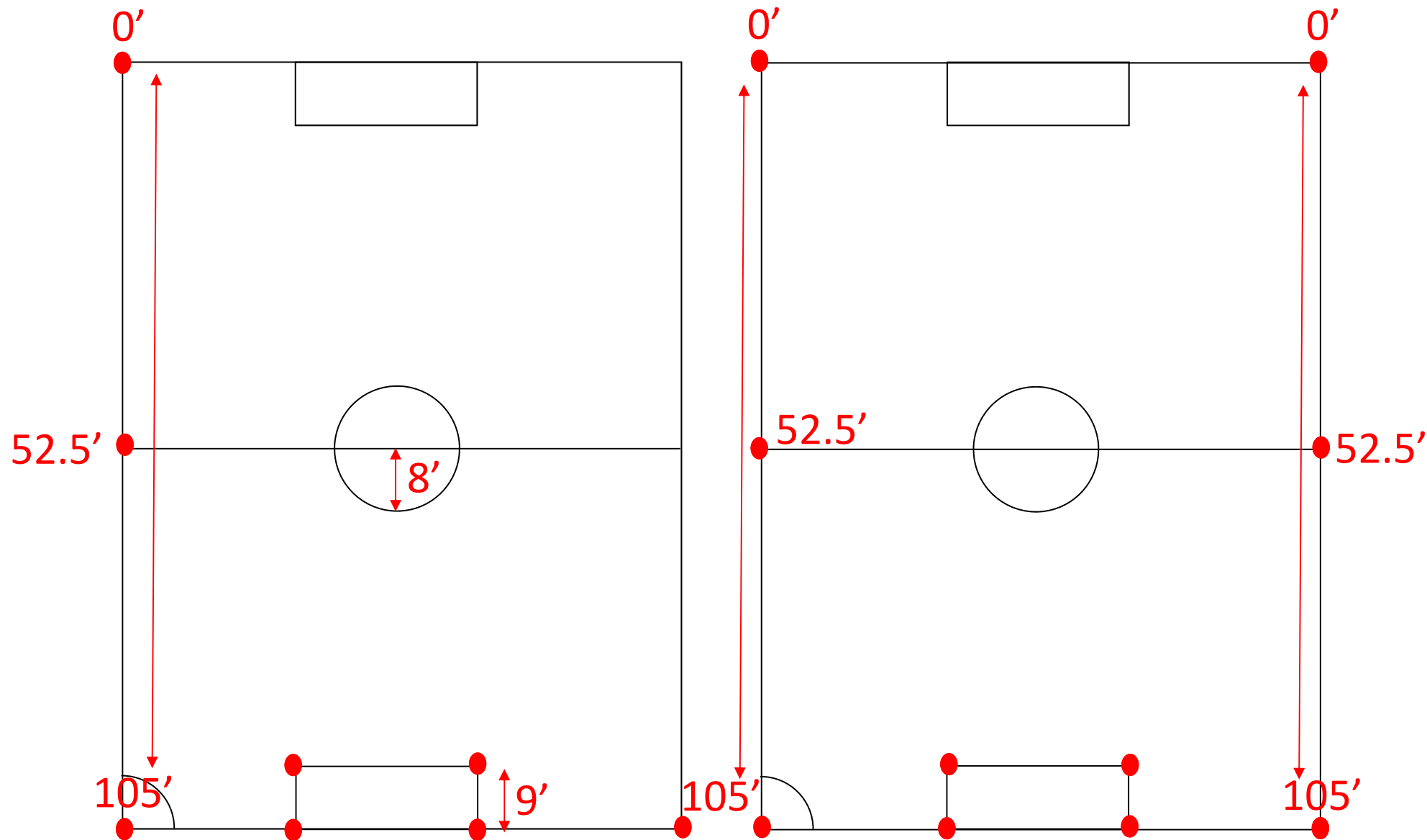
# DNL Field Dimensions



# Field Width Dimensions



# Field Length Dimensions

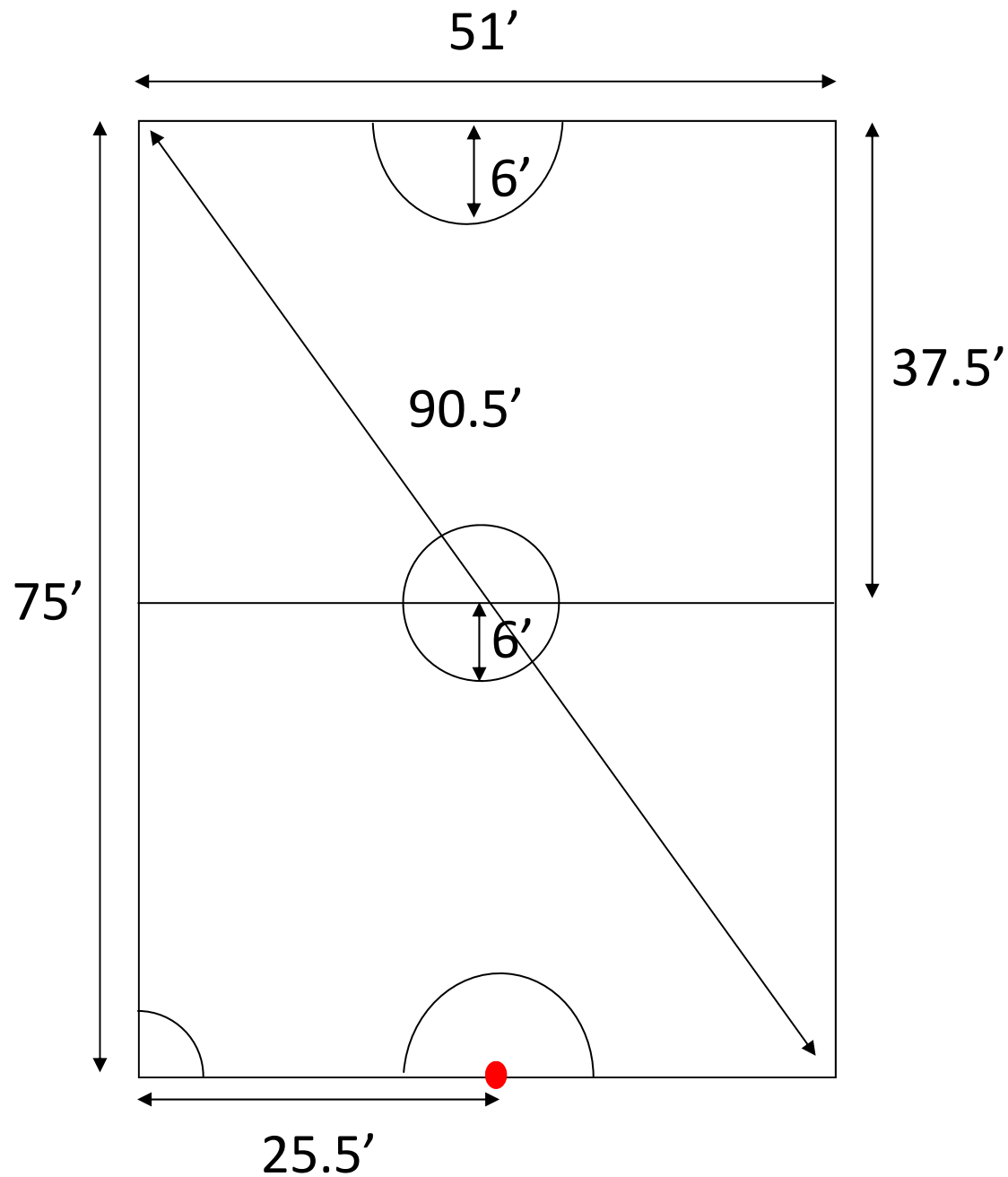


## Instructions for Lining the DNL Fields

- Take a moment to gauge if the field is going to fit width-wise and length-wise in the area available taking care to note any drop-offs/inclines within the playing area. Place your first stake at the desired point and measure 105' in one direction (field length) and a second measurement from the same stake 156' perpendicular to your first line (field widths for both fields).
- Once you have a rough idea of your field placement, place a second stake at the 156' mark (the width of two fields + the center section where team benches are located).
- This measurement is your starting line from which your sidelines/centerlines will be determined.
- Mark the field at the following spots along the measuring tape: 0', 25', 50', 75', 81', 106', 131', 156'. Place your second stake at the 156' mark.
- After those are marked, pull a measuring tape from your second stake 105' perpendicular down the sideline measuring the length of the playing fields (DO NOT PLACE A THIRD STAKE YET).
- Measuring off the first stake, pull the measuring tape 188' to square the field placing a third stake at the point where the two measuring tapes join at 105' and 188'.
- Before you remove the 105' measuring tape from the second stake, mark the field at 52.5' (center line).
- To find the forth corner, repeat the previous step measuring from the second stake placing a fourth stake at the point where the two measuring tapes join at 105' and 188'.

**Helpful hint:** Before you remove the tape measures from the corner spikes, mark as many points on the field as you can so as to avoid re-measuring for the center line, goal box, etc.

# U6 Field Dimensions



## Instructions for Lining the U6 Fields

- Take a moment to gauge if the field is going to fit width-wise and length-wise in the area available taking care to note any drop-offs/inclines within the playing area. Place your first stake at the desired point and measure 75' in one direction (field length) and a second measurement from the same stake 51' perpendicular to your first line (field width).
- Once you have a rough idea of your field placement, place a second stake at the 51' mark.
- This measurement is your starting line from which your sidelines/centerline will be determined.
- Mark the field (end-line) at the following spots along the measuring tape: 0', 25.5', 51'.
- After those are marked, pull a measuring tape from your second stake 75' perpendicular down the sideline measuring the length of the playing field (DO NOT PLACE A THIRD STAKE YET).
- Measuring off the first stake, pull the measuring tape 90.5' to square the field placing a third stake at the point where the two measuring tapes join at 75' and 90.5'.
- Before you remove the 75' measuring tape from the second stake, mark the field at 37.5' (center line).
- To find the forth corner, repeat the previous step measuring from the second stake placing a fourth stake at the point where the two measuring tapes join at 75' and 90.5'.