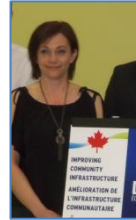


2013 ANNUAL REPORT



Niverville Community Services Department

CONTENTS

| | |
|--|----|
| A letter from the Community Services Manager | 2 |
| Our Mission | 3 |
| Organizational Flow Chart | 4 |
| Advisory Committee Members | 4 |
| 2013 Program Participation | 5 |
| Vision for 2014 | 8 |
| Recreation Facilities | 13 |
| Community Partners | 13 |
| Financial Reports | |
| 2014 Proposed Budget | |

Community Services Manager's Message

Dear Reader,

The Niverville Community Services Department enjoyed a tremendous year of exciting changes, growth and success throughout 2013 and I am proud to share our accomplishments in this Annual Report.

Some of the highlights from 2013 are of particular note:

- We held a winter family fun day with lots of free activities for people to try. Both were very well attended
- We held our 5th Annual Recreation and Wellness Showcase
- We did extensive improvements to the Niverville Arena, which included new lighting, a low-e ceiling above the ice, and new flooring, ceiling and lighting in the SE Meeting room
- Many programs that ran this past year were running at full capacity with increased use of the Niverville Recreation facilities.
- Summer camps were well attended.
- We participated in the Niverville Old Tyme Country Fair with our annual couch potato race.

It has been a busy and exciting year for the Niverville Community Services Department!

I welcome your feedback, questions or comments about our Annual Report, and hope that it will provide you with information that is useful and informative.

Donna Watts

Community Services Manager, Town of Niverville

Our Vision

Our vision is to offer a full range of accessible recreational opportunities for all ages and abilities and to provide a commitment to meeting the challenges of today and the opportunities of the future.

Our Mission

The Niverville Community Services Department is the community connection for sports, recreation, health and leisure, arts, programs and entertainment. The Recreation Advisory Committee seeks to promote and encourage programs that benefit all ages - children, youth, teens, adults and seniors; programs that promote personal growth, self-esteem and health awareness and that significantly contribute to the quality of life enjoyed by all Niverville Residents.

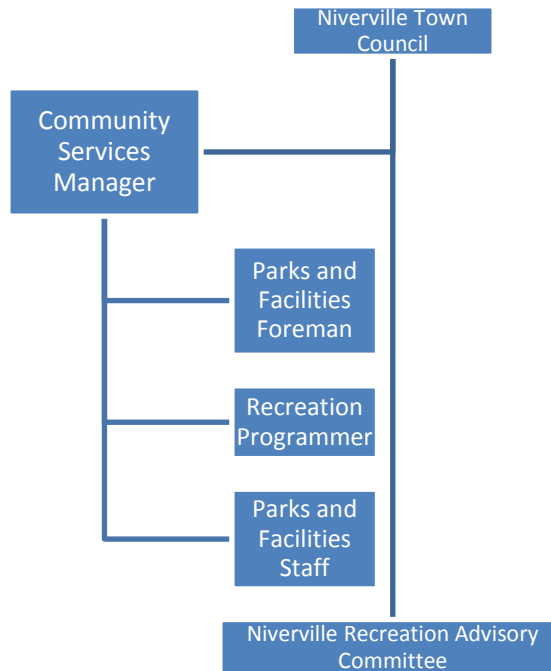


Contact information

Donna Watts, Community Services Manager
Box 1269
Niverville, MB
R0A 1E0
Ph: 204.388.4078
Fax: 204.388.6110
Email: Donna.Watts@whereyoubelong.ca

Robyn Yates, Recreation Program Coordinator
Email: Recreation@whereyoubelong.ca

Organizational Flow Chart



2013 Rec Advisory Committee

| | |
|--|--|
| Chairperson / Town Council Appointed Representative | <ul style="list-style-type: none"> •Angela Janz •Angela.Janz@whereyoubelong.ca |
| Hanover School Division Appointed Representative | <ul style="list-style-type: none"> •Ruby Wiens •Ruby.Wiens@gmail.com |
| Community Representative | <ul style="list-style-type: none"> •Susan Watson •Susan@ALittleNutrition.com |
| Community Representative | <ul style="list-style-type: none"> •Annette Fast •annette@vonast.mb.ca |
| Community Representative | <ul style="list-style-type: none"> •Rod Downey •Downey@mymts.net |
| Community Representative | <ul style="list-style-type: none"> •Jared Funk •JaredFunk@shaw.ca |
| Community Representative | <ul style="list-style-type: none"> •Kevin Derksen •kcdersken@gmail.com |

2013 Program Participation

2013 was the second year of running recreation programming in Niverville and we experienced a lot of success and excitement over many of our programs. Over the course of the year, we offered a wide variety of programming – arts, cultural, fitness, safety and more.

| Spring | January-March |
|----------------------------------|---------------|
| Program | Participation |
| Evening Yoga | 13 |
| Crochet/Knitting workshop | 2/cancelled |
| Mom & Baby Yoga | 0/cancelled |
| Dog Obedience | 7 |
| Photo Workshop - people pictures | 2/cancelled |
| Creative Kids | 0/cancelled |
| Zumba | 29 |
| Stained Glass | 0/cancelled |
| Kids Muay Thai Kickboxing | 10 |
| Cardio Kickboxing | 8 |
| Babysitters Course | 30 |
| Creativity Workshop | 0/cancelled |
| Youth Curling | 32 |
| Tyson Method - Prenatal Fitness | 2/cancelled |
| Zumba | 7/cancelled |
| Beginner Belly Dance | 0/cancelled |
| Dog Obedience | 2/cancelled |
| Emergency First Aid | 10 |
| Home Alone | 6 |
| Evening Yoga | 11 |
| Stained Glass | 0/cancelled |
| Card Making Class | 2 |
| Dog Obedience | 3/cancelled |

| | |
|------------------------------|-----|
| Winter Family Fun Day | |
| Pancake Breakfast | 200 |
| Drop-in activities | 100 |
| Chili Contest | 7 |
| Dog Sled Rides | 50 |
| Sleigh Rides | 250 |
| Kids Snowshoe Race | 6 |
| Adult Snowshoe Race | 4 |

| | |
|--------------------|-----|
| Wacky Sled Race | 1 |
| Family Fun Curling | 50 |
| Turkey Shoot | 20 |
| Skating | 50 |
| Snow Painting | 40 |
| Tobogganing | 150 |

Summer

April-June

| Program | Participation |
|---------------------------|---------------|
| Tuff-N-Up | 18.5 |
| Zumba | 19 |
| Emergency First Aid | 14 |
| Emergency First Aid | 11 |
| Babysitters Course | 16 |
| Emergency First Aid | 11 |
| Kids Muay Thai Kickboxing | 3/cancelled |
| Cardio Kickboxing | 9 |
| Card Making | 1 |
| Evening Yoga | 11 |
| Card Making | 0/cancelled |
| Photographing Children | 2/cancelled |
| Nature Photography | 4/cancelled |
| Sunset Photography | 5 |
| Krafty Kids | 3 |
| Claymation | 12 |
| Gardening 101 | 9 |
| Sunrise Yoga | 8 |
| Lunchtime Yoga | 4 |
| Tuff-N-Up | 12 |
| Standard First Aid | 5 |
| Zumba | 14 |
| Everyday Fitness | 7/cancelled |
| Kids Muay Thai Kickboxing | 0/cancelled |
| Cardio Kickboxing | 1/cancelled |
| Babysitters Course | 4/cancelled |
| Dog Obedience | 11 |
| Lunchtime Yoga | 2/cancelled |
| Mom & Baby Yoga | 3 |
| Sunrise Yoga | 3 |

Fall

| Program | July-Sep Participation |
|----------------------------|-------------------------------|
| Sunrise Yoga | 0/cancelled |
| Evening Yoga | 6 |
| Dog Obedience | 5 |
| Gross Out Summer Camp | 8 |
| Multi-Sports Camp | 13 |
| Kinder Camp | 19 |
| Mad Science ~ Energize It! | 14 |
| Art Camp (5-8) | 8 |
| Art Camp (9-12) | 8 |
| Gymnastics Camp (5-7) | 13 |
| Gymnastics Camp (8 & up) | 14 |
| British Soccer Camp | 24 |
| Emergency First Aid | 4 |
| Emergency First Aid | 0/cancelled |
| Canning Workshop | 3 |
| Zumba | 23 |
| Tuff-n-up | 14 |
| Everyday Fitness | 4/cancelled |
| Cardio Kickboxing | 11 |
| Kids Muay Thai Kickboxing | 12 |
| Evening Yoga | 16 |
| Dog Obedience | 7 |
| Nature Photography | 0/cancelled |
| Hunters Safety | 9 |
| Claymation | 6 |
| Stained Glass | 2 |
| Tyson Method | 12 |
| Tyson Method | 0/cancelled |



Parks and recreation opportunities are essential for strengthening and maintaining a healthy community. Positive impacts are evident throughout the community. Recreation brings neighbours together, encourages safer, cleaner neighbourhoods and creates a livelier community atmosphere.

Parks and recreational facilities also help improve a community's image, socioeconomic status and enhances the area's desirability.



Vision Plans for 2014

During our 2011 planning session, the Niverville Recreation and Wellness Commission created an action plan for recreation, focusing on five main planning areas – Programming, the Community Recreation Plan, Resource, Public Awareness and Education, and Parks and Facilities. Below is the evaluation of this action plan, and future direction for 2014.

ACTION PLAN

Planning Area #1: Programming

Strategic Statement: To encourage the development of public recreation which will include physical recreation, social recreation, artistic and group's recreation, intellectual recreation, audience entertainment and wellness promotion based on identified need.

| ACTIVITY / TASK | EVALUATION | FUTURE DIRECTION |
|---|---|--|
| Art classes for Kids and Adults | Held with good response | Will continue to offer |
| February Fitness Month | Held fun day instead | Will continue to offer |
| Broad range of classes to develop well-rounded community | Great success! | Will continue to offer |
| Kids in the kitchen cooking class | No adequate space available | Will continue to explore options |
| Summer camps for kids (skill development) | Good response to summer camps | Will continue to offer and expand |
| Programming for seniors (working with services for seniors) | Difficulty partnering with senior's program coordinator | Will look at other avenues/ partnerships |

ACTION PLAN

Planning Area #4: Public Education and Awareness

Strategic Statement: To promote the value of Recreation and Wellness and the important contribution that it makes to lead a healthy lifestyle.

| ACTIVITY / TASK | EVALUATION | FUTURE DIRECTION |
|---|--|--|
| Have loan programs available for items such as snowshoes, skates, etc | Snowshoe, gps, etc loan program running. | Will continue |
| Challenges within community groups to encourage engagement | Wasn't done this year | Will consider for future |
| Rec and Wellness Fair | 5 th annual one held in September. Great response | Will continue annual rec and wellness fair to increase awareness of recreation opportunities in Niverville |

| | | |
|--|--|---------------|
| Increased presence at community events | Continue to show presence at Imagine Run, Niverville Fair and other community events | Will continue |
| Continued involvement in schools | Preschool visits | Will continue |

ACTION PLAN

Planning Area #5: Parks and Facilities

Strategic Statement: To promote and encourage sustainable multiuse facilities

| ACTIVITY / TASK | EVALUATION | FUTURE DIRECTION |
|--|---|------------------|
| <ul style="list-style-type: none"> - Extra picnic shelters and picnic tables with bbq pits - Canteen storage facility - Clusters of Evergreen trees along Hespeler Walkway - Solar lamps on path in Hespeler - Outdoor skating trail - Community Facility Inventory - Develop Hespeler Park through lens of Crow Wing Heritage - Increase community participation in Beautification project - Experiment with ideas now to learn what works for Future Multi-Use facility (+ feasibility/planning) - Explore idea of future pond/wetland/boardwalk area - Outdoor skating area by arena | <p>Improvement of Parks and facilities limited to what was in our action plan due to the fact that the town hired someone to do a master plan for Hespeler park.</p> <p>Outdoor skating rink was created by the arena (just flooded section of land and put a covered bench/seating area by it) Feasibility study was done on community campus with aquatic centre as phase 1</p> | |

Planned Activities for 2014 include:

- Art Classes (children, adults and family)
- Fitness classes (boot camps, yoga, exercise classes)
- Dog Obedience classes, First Aid courses, babysitting classes, hunter's safety class, etc
- participation in the Fair with our annual couch potato race
- partnership with Chamber of Commerce for events – movie at the park, Town Christmas tree lighting, etc
- Summer camps – introducing a variety of new ones

Recreation Parks and Facilities

The newly formed Community Services Department manages the Niverville Arena, the Niverville Curling Club and all of the parks in Niverville (Hespeler Park, Tot Park, JR Park, Opa's Park, Edelweiss Park and the off leash dog park). Upkeep of green spaces around lakes in town also falls under the Community Services Department. Soccer and baseball fields, and a large picnic shelter are all located in Hespeler Park and are maintained by the Community Services Department.

Community Partners

The Niverville Community Services Department has developed a number of valuable partnerships with community organizations. Working in cooperation with our partners, we jointly serve the needs of the Niverville community. Our community partners make valuable contributions that enhance Niverville's recreational experience and quality of life.

Organizations the community services department works in partnership with, liaises with, provides resources to, etc.

- Niverville Heritage Gardens Committee
- Old Tyme Country Fair Committee
 - Niverville Soccer Club
 - Niverville Flag Rugby
- Niverville Baseball Committee
- Crow Wing Trail Association
- Imagine Run Committee
- Niverville Collegiate Institute
- Niverville Elementary School
 - Niverville Preschool
- Niverville Curling Club Committee
 - Clipper Ice Sports
- Niverville Jr. and Sr. Clippers

The Niverville Community Services Department does not have a joint use agreement in place with Hanover School Division, but are working with Hanover school division to create one.

According to the most recent Statcan census (in 2011), Niverville had a population of 3,540 people. This represented 43.7% increase in population from the 2006 census, making it one of the provinces fastest growing communities. The median age in Niverville is 30.9.

The Statcan 2011 census shows that Niverville has an area of 3.39 square miles [8.8 km²].

Using the above population and land area values, Niverville had a 2011 population density of 402 people per square kilometer.