

HY²

NEW **PASCO**[®] PALLETIZER

Innovative High and Square Palletizing

WHY **HY²**?

- 1** Save time & money - stack bags or boxes with very little labor
- 2** Ship Better Loads - difficult to stack bags are palletized in tight, square loads that stay put
- 3** 2-year - *Zero Risk Warranty*

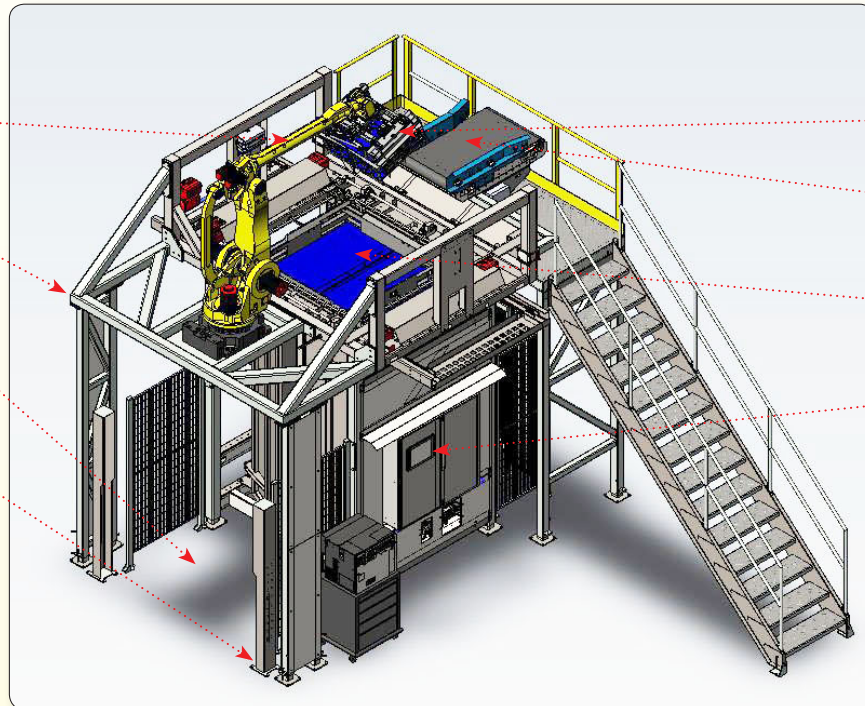
INNOVATIVE FEATURES:

FANUC robotic articulating arm

Modular footprint

Empty pallet loaded into elevator by operator

Easy bolt-together assembly & installation

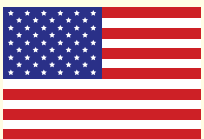


PASCO designed clam-shell EOAT

High level belt infeed conveyor

Layer Squaring & Tamping

Custom controls/ Allen Bradley



American Made • Built to Last
Parts Around the Corner



PASCOSYSTEMS.com
800.489.3300



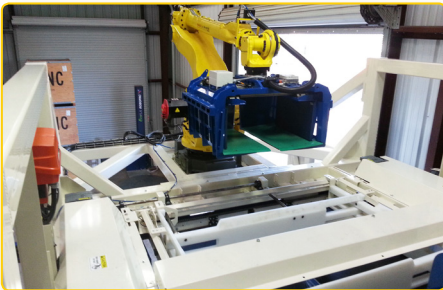
NEW **PASCO**[®] PALLETIZER



Innovative High and Square Palletizing

The HY² is a modular system consisting of a standard base unit with customer specific additions. The base system consists of a short length horizontal belt infeed conveyor, robot articulating arm, robot gripper head, sliding door mechanism, four sided squaring collar, elevator arm, lower sub framing with pneumatic doors and necessary control functions, guarding and upper platform.

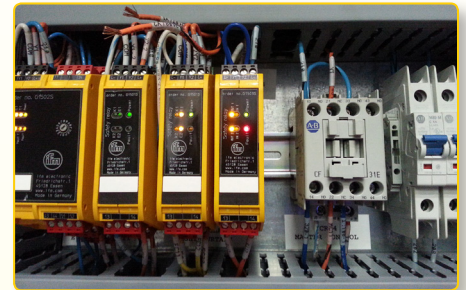
The base model HY² palletizing system is semi-automatic, in that the empty pallet is loaded manually by the operator. The system can be integrated with options such as an automatic slipsheet dispenser, pallet dispenser, and necessary chain and roller type conveyors including a stretch wrapper if a higher production volume is required.



FANUC Robotics | Largest supplier of robots worldwide.



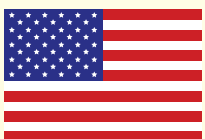
Tight, Square Loads | Creates secure pallet loads from even the most unwieldy bags.



Advanced Controls | All panels and programming created in our St. Louis, MO facility.

TECHNICAL SPECIFICATIONS - HY² PALLETIZER

Product Applications:	Bags, Cases & Trays
Maximum Container Weight:	Products up to 100#, heavy duty options available
Typical Palletizing Rates:	Up to 25 containers per minute
System Footprint:	Base unit is 100" wide x 175" deep x 216" high



American Made • Built to Last
Parts Around the Corner



800.489.3300

2600 South Hanley Road, #450
St. Louis, Missouri 63144
phone 314.781.2212
fax 314.781.9986
PascoSystems.com