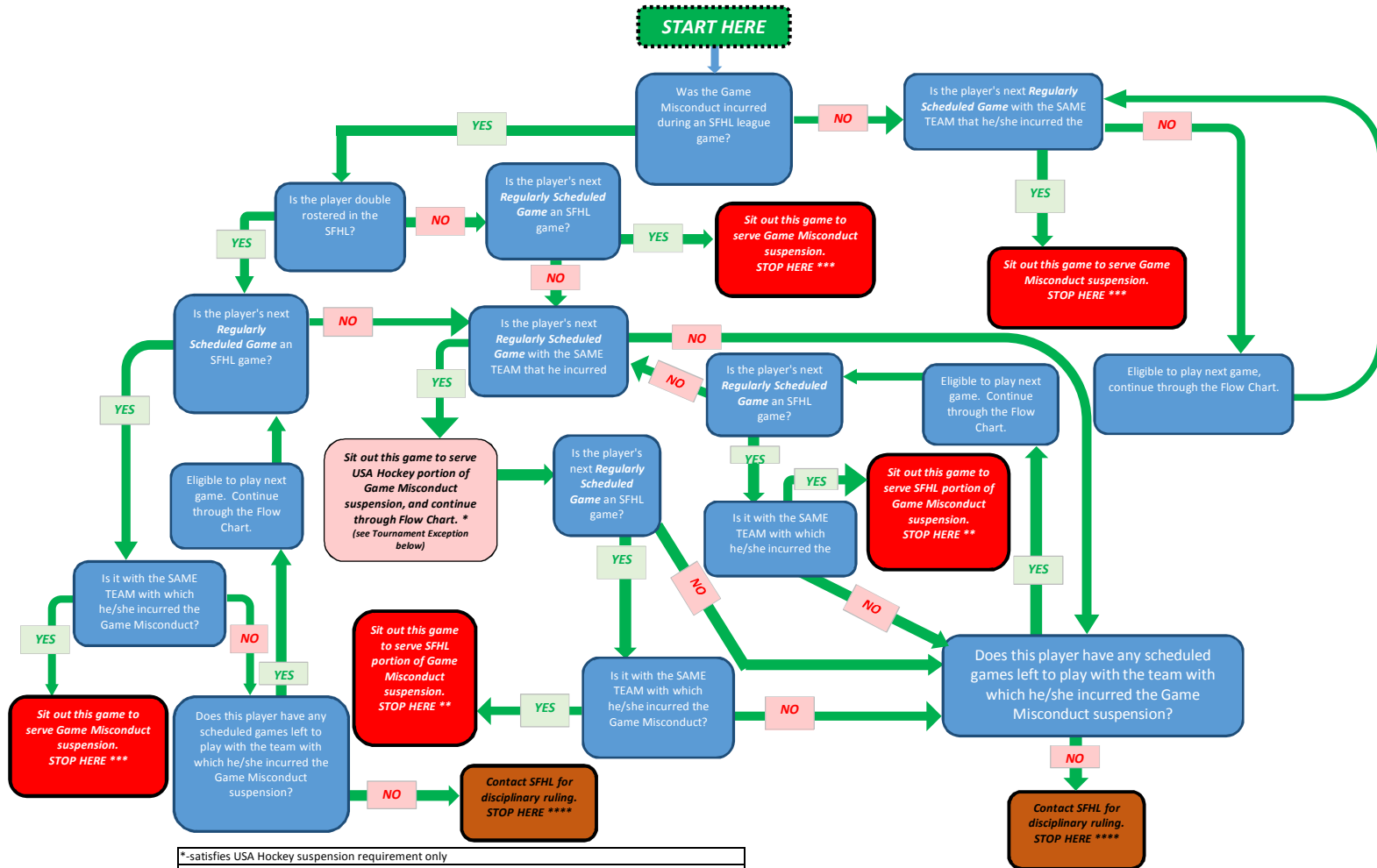


# 2016-17 SFHL Game Misconduct Flow Chart (updated 11/15/16)



\*-satisfies USA Hockey suspension requirement only  
 \*\*-satisfies SFHL suspension requirement  
 \*\*\*-satisfies both USA Hockey and SFHL suspension requirement  
 \*\*\*\*-If you have exhausted all scenarios in the flow chart, and the suspended player does not have any remaining scheduled games, then the suspension will be handled by SAHOF's Supplementary Discipline. The player is still subject to suspension.  
 Regularly Scheduled Game = a USA Hockey sanctioned game that is already scheduled prior to the start of the game in which the suspension was incurred. This game cannot be a game in which the player is already serving a Game Misconduct suspension.  
 Tournament Exception-in cases where a player incurs a Game Misconduct during the last SFHL game before participating on a tournament, the suspended player may apply to have serving the suspension during the first game of the tournament count towards the satisfaction of the SFHL suspension requirement  
 SAME TEAM means the same USA Hockey approved roster that was used in the game in which he/she incurred the suspension