

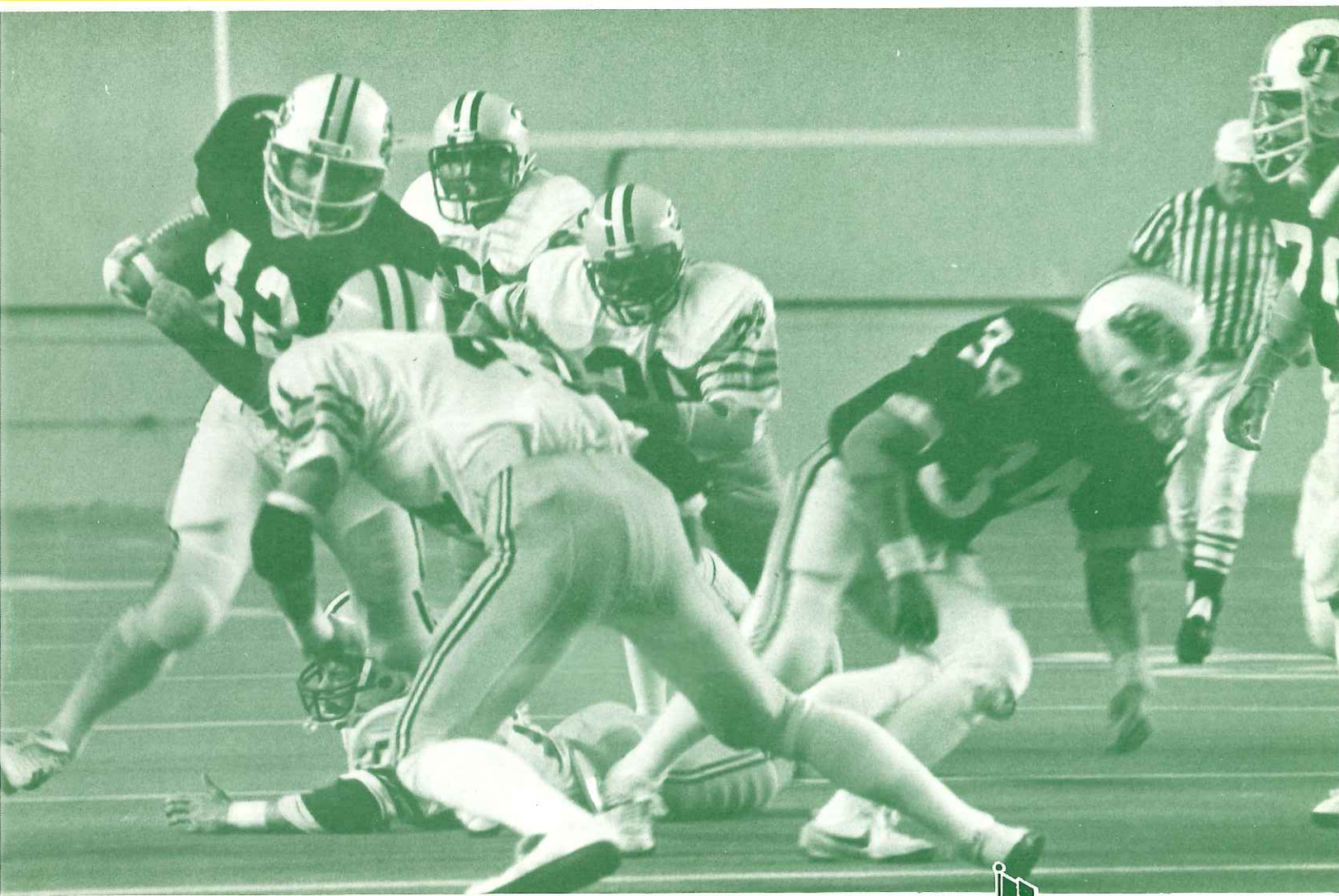
UPS



PLU

PRESENTED BY
THE TACOMA ATHLETIC COMMISSION

University of Puget Sound vs Pacific Lutheran University



Saturday, September 22, 1984

OFFICIAL PROGRAM 100



1983 REUNION SETS ATTENDANCE RECORD

The cross town rivalry between the University of Puget Sound and Pacific Lutheran University means as much to the fans as it does to the players.

The crowd gathered in the Tacoma Dome was the largest paying crowd in the 58-game series which dates back to 1931. The previous record of 13,167 was set in 1977 at the Kingdome.

The two teams last met in 1979 when UPS defeated PLU 29-14. After the 1979 game they went their separate ways scheduling those whose athletic programs were similar to their own. UPS was a member of NCAA Division II and awarded scholarships on athlete's abilities. PLU, however, competed at the NAIA Division II level and the Lute scholarships were awarded on the basis of need.

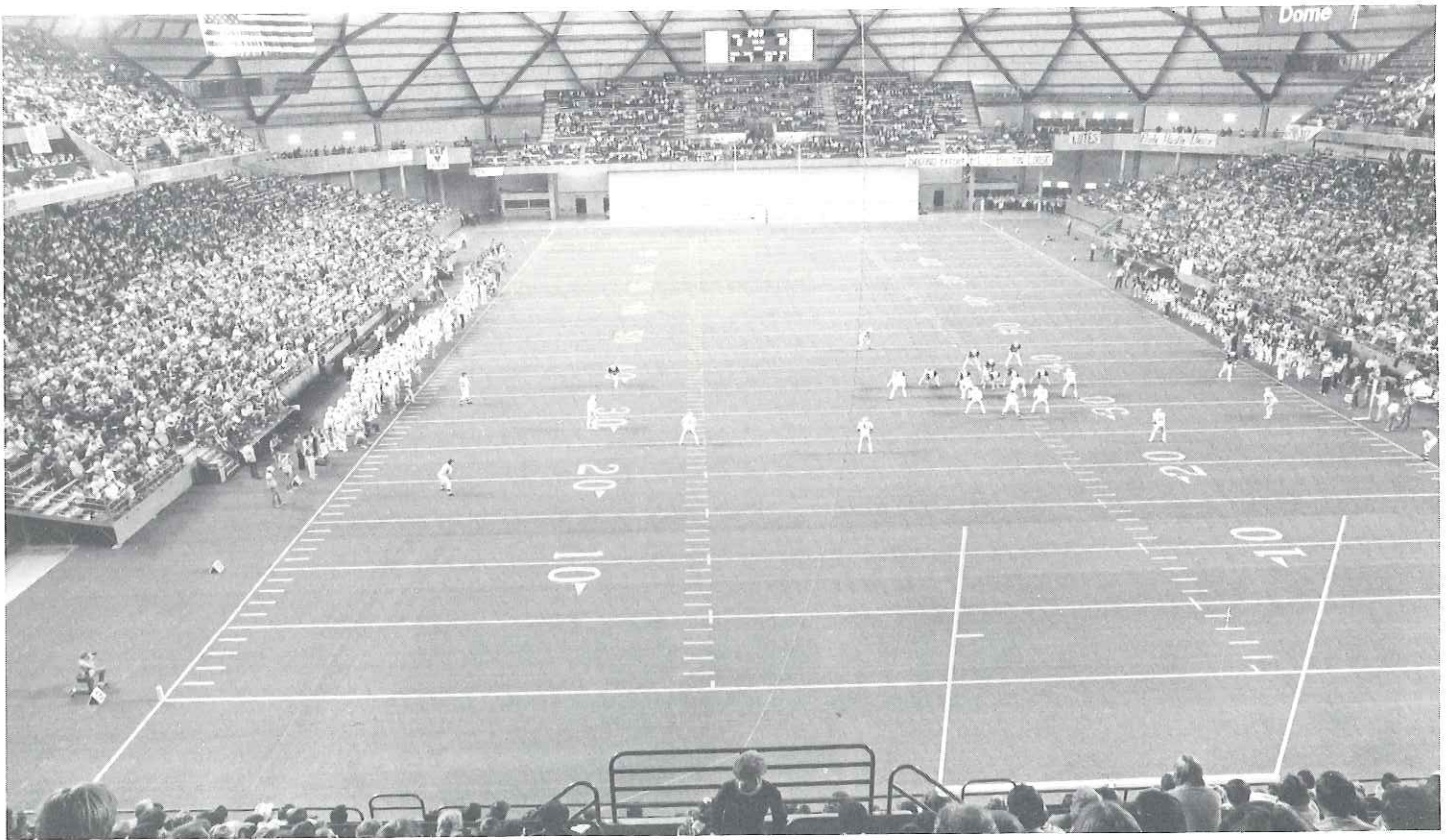
In 1983, after 16 years as an NCAA school, UPS redesigned its football program to award scholar-

ships on the basis of need and the Loggers rejoined the NAIA. That brought the two football teams together again and what resulted is one of the most exciting come-from-behind revenge victories for PLU in the history of the series.

The fans in attendance not only saw an exciting football game but also witnessed the first-ever collegiate contest to be played in the Tacoma Dome. All agreed that there was not a bad seat in the house. Whether they sat in the sideline seats, the end zone seats or in the Gallery Restaurant, they were equally involved in the action on the field.

Dome officials also were pleased with the turnout and stated that "it was a very well-behaved crowd."

It looks like the Tacoma Dome will be the new home for the annual civil war for this cross town rivalry.



TACOMA ATHLETIC COMMISSION



Bud Barnes
President



Jerry Beitz
Vice President



Dan Inveen
Vice President
Co-Chairman



Greg Pratt
Co-Chairman

The Great Gretzky



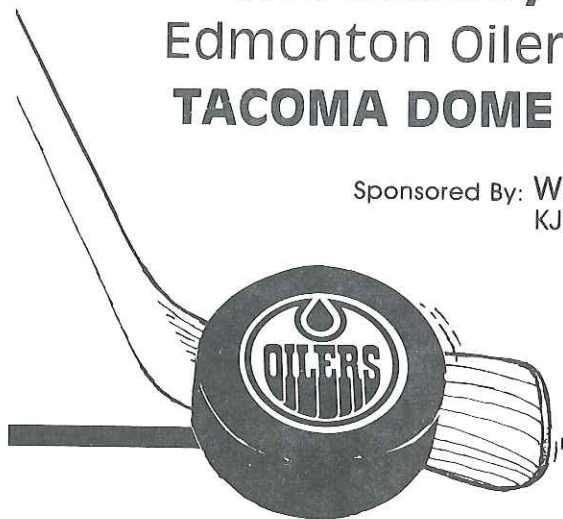
and

The Stanley Cup Champions

Edmonton Oilers vs. St. Louis Blues

TACOMA DOME OCT. 6, 1984 7:15 P.M.

Sponsored By: Weyerhaeuser, Pacific First Federal
KJR/Hoagy's Corner, Fred Meyer



TICKETS: 16.50 • 12.50 • 8.50

Available at all 15 Ticketmaster locations
or by phone with Visa, Mastercard or Bon
Marche credit card. . . Tacoma number is
272-6817 or in Seattle 628-0888.

\$2.00 OFF 12 and under or over 65.

Tacoma's

Bellarmino Oktoberfest

8TH ANNUAL

5 PM to 1 AM

OCTOBER 5 & 6

Enjoy Good Food, Fun and Friends

- ALL INDOOR -

• **BAVARIAN GARDEN**

• **INTERNATIONAL FOOD**

• **DANCING**

• **GAMES OF CHANCE**

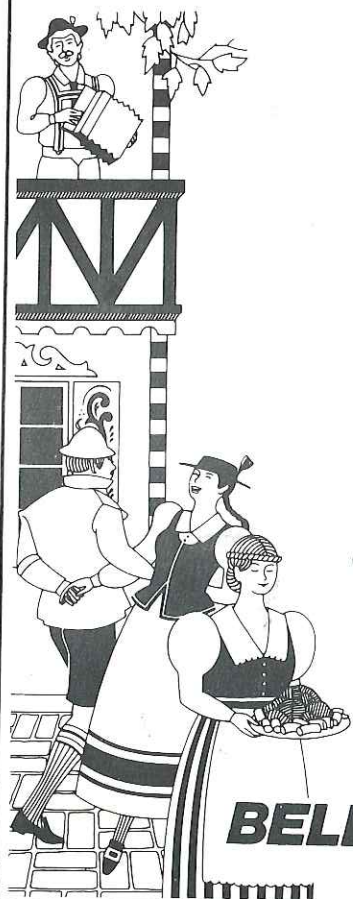
• **MUCH MORE**

*DUE TO CONSTRUCTION
OKTOBERFEST ACTIVITIES THIS YEAR
WILL BE LIMITED TO ADULTS ONLY.*

BELLARMINE PREP

2300 SO. WASH.
TACOMA, WA.

Sponsored by WELCH and CONDON, ATTORNEYS AT LAW



59TH GAME SPARKS 30 YEARS OF FOOTBALL MEMORIES

The largest paid attendance ever to watch a Pacific Lutheran University and University of Puget Sound football contest gathered in the Tacoma Dome last year to see a game that was played with the intensity of the Superbowl. As in any competitive rivalry, these cross-town teams went all out to mark the comeback of the annual Lute—Logger football showdown.

The record setting crowd of 14,830 was not disappointed by the action on the gridiron below. The game was not decided until the final 28 seconds in a memorable come-from-behind victory for PLU.

Ron Simonson, UPS head coach, commented before the contest that he wanted his squad to have balance but that field position and game conditions would render as the deciding factors of the game. As it turned out, the important field positions and conditions were in favor of the Lutes as their multi-defense proved to be too strong for the Loggers to chop down.

Jeff Rohr, PLU's senior sensation, found his way in and around the tight Logger defense any way he could. He carried the ball 36 times for 177 yards, he punted five times for a 40.4-yard average, he kicked off and he kicked two field goals; one to tie the game and the game-winning three pointer.

Rohr surpassed his previous game-high rushing total by nearly 50 yards and his two field goals were the first in his collegiate career. The 200 pound fullback out of Washington High School, became the PLU placekicker the day before the game when junior Todd Rosenbach was sidelined with a congenital neck vertebra problem.

Although PLU maintained the best field position throughout the game, UPS was able to take advantage of their defensive breaks to stop the Lutes from scoring on some key drives.

PLU threatened twice in the first period. They marched down to the Logger 15-yard line when UPS' Darin Smith intercepted a pass to stop the drive.

On PLU's next possession, Logger Todd deCarteret picked off a pass intended for Joel Johnson and ran 56 yards to score with 7:32 remaining in the first period. This put the Loggers in the lead 7-0.

When Rohr was stopped on a fourth and one situation, the Loggers saw opportunity and grabbed it. UPS quarterback, Kevin Reimer took to the air and moved

his team into Lute territory before being stopped at the 14. Jim Beckman then kicked a 32-yard field goal to boost the Logger lead to 10.

With time running out in the half, PLU hit the scoreboard with just 48 seconds left on the clock. Quarterback Kevin Skogen connected with Randy Hamlin on an 11-yard isolation pass play to tally 6 points for the Lutes. The extra point was good and narrowed the UPS margin down to only three at half time.

Early in the second half Skogen scrambled down the field to reach the UPS 22. Four plays later, Rohr kicked his first-ever collegiate field goal (35 yards) to tie the score at 10 with 10:17 left to play in the third quarter.

The Lutes threatened to score again but were stopped by the stubborn Logger defense three times at the UPS three and two yard lines. With less than six minutes to play, PLU was forced to turn the ball over on downs.

PLU's stone wall defense forced the Loggers to punt after holding them to five yards on three plays. UPS' Grant Allen punted the ball to midfield where the Lutes began their game-winning drive. Rohr's field goal came with only 28 seconds to go in the game and put the topping on the cake with a three-point capper.

The PLU defense sparkled the entire game having held the Loggers to just five yards rushing in the first half and a total of 34 yards in the game and just seven first downs.

The victory gave PLU their first win in six years and their 12th in the series which dates back to 1931. UPS leads in the series 41-12-5.



VIS·REY INC.

LUMBER • SIDING • PAINT • HARDWARE

12702 Pacific Avenue • Tacoma, WA 98444 • Phone 531-3230

GRID TITLE EXCHANGES

Tonight's game marks the 59th time these two cross town rivals have met on the football field. Through the years a lot of changes have taken place; the College of Puget Sound became the University of Puget Sound and Pacific Lutheran College became Pacific Lutheran University. Equipment has been modified, rules altered and added, and the game played inside and out, including Lincoln Bowl, Franklin Pierce, the old CPS field, the Kingdome and now the Tacoma Dome. Despite these rapid and modern changes, one thing has remained the same...the competitive spirit that accompanies these annual duels.

The head-to-head competition has been fierce from the beginning. Although UPS leads in the series, the victory margin over the years averages out to be only four points per game.

CPS SWEEPS 1954 SERIES

Thirty years ago the two teams collided twice and CPS was the victor in each feud. At that time, the two colleges played each other in their first and last games of the season.

The first game of 1954 looked as if it would be a scoreless tie, but two big breaks for both teams turned into lights on the scoreboard. For PLC the break came when a punt grazed the leg of a Logger and was recovered by PLC on the CPS 2-yard line. Two plays later the Lutes had a six point lead. The conversion attempt was missed and the score remained 6-0.

For CPS the break came when Dale Meshke returned the second half kickoff 79 yards into the end zone for the sole CPS tally. Quarterback Joe Stortini replaced the injured Warren Logan to kick the extra point that would eventually be the game winning point.

Before the game, Coach Heinrich emphasized the offense. After the game he commented that it was the defense that won the game and that it "got better as the game progressed."

Heinrich used the "iron man theory" in this contest; Center Bob Ehrenheim played the entire 60 minutes and seven other Loggers played at least 55 minutes of the game.

Seven weeks later, they would play their second game of the 1954 season. It would be the 20th time that the Lutes and the Loggers would meet on the football field.

This game was expected to be one of the closest

games the two had ever played because both teams were so evenly matched. Despite this fact, CPS went on to win their fourth straight game against the Lutes 13-7.

This game displayed a lot more action than the previous meeting but it came in spurts. CPS quarterback Joe Stortini lofted a 41-yard pass to Tom Glump in the closing minutes of the game to set up the final Logger touchdown.

With the game tied at seven, the CPS offense searched for a secret weapon to offset the PLC defense. The Logger running game had been effective throughout the second half and PLC expected a continuation of this fierce running game. CPS, however, retaliated with an aerial attack which took the PLC defense by surprise. What was yet another surprise was the target that Stortini selected. Glump was not a likely subject because he split his playing time between the end and tackle positions. Glump caught the pass on the run and was headed for the end zone before being tackled from behind at the PLC seven-yard line. One crack at the PLC defense was all fullback Rich Dodds needed to put CPS on the scoreboard and retake the lead. Stortini's conversion attempt went wide but the Loggers were able to hang on to the six point lead despite a last chance effort from the Lutes.

With four minutes remaining in the game, PLC quarterback Tommy Gilmer lateralled to halfback Don



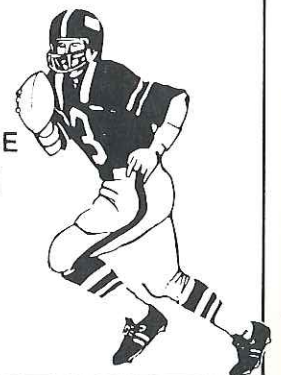
"TEAM SPECIALISTS SINCE 1960"

SCOTT'S

ATHLETIC EQUIPMENT, INC.

4001 100th St. S.W. • Tacoma • 584-1197

- QUALITY MERCHANDISE
- COMPLETE SELECTION
- EXPERT SERVICE



... 10 TIMES IN 30 YEARS

Gaarder who threw a 20-yard pass to Brian Rice alone at the CPS 20. Had the ball not been deflected by Stortini, it surely would have been a touchdown for the Lutes.

PLC out-downed the Loggers 12-9 and out-rushed them 155-148 but the Loggers took advantage of PLC's three interceptions and two fumbles.

UPS PLU SPLIT 1964 SERIES

The September 1964 edition of the UPS PLU battle was the last time that the two teams met in Lincoln Bowl. Their next meeting would take place in the newly finished Baker Stadium on the campus of UPS.

Rumors circulating before this game stated that the battle would have to be decided up front. Both schools had gone under major rebuilding jobs after losing powerful seniors and both coaches complained of a lack of depth on their teams. This fact became evident with the low-scoring 7-6 victory for Puget Sound.

Early in the game Les Rucker scored on a 12-yard run for Pacific Lutheran, but their lead darkened when Puget Sound tackle Ron Glew picked up a fumbled PLU pitchout in the third quarter and carried the ball 24 yards to score. Glew also kicked the extra point which eventually gave the Loggers the win.

The tables were turned in the second game of the 1964 season and PLU became the victor after six straight losses to the Loggers. PLU scored in every quarter in their 27-7 victory over the Loggers and spoiled UPS' Homecoming before 3,500 fans in the new Baker Stadium.

PLU got an early break in the game when UPS quarterback Dennis Bakke fumbled for the second time and PLU tackle Dave Olson recovered on the UPS 31. Ten plays later fullback Ken Tetz went the ensuing four yards to score.

The Loggers' lone tally resulted from a bad snap over the head of PLU punter Jeff Carey and was recovered by UPS on the PLU 16. Five plays later UPS quarterback Steve Maddocks connected with Joe Peyton in the end zone.

PLU's Morris Blankenbaker returned the following kickoff 37 yards to the Logger 47 and 11 plays later quarterback Kurt Yates ran the ball into the end zone on a ten-yard scamper.

PLU drove another 61 yards in the third quarter for their third touchdown. Yates connected with Jim Pederson twice for 27 yards and a touchdown during the drive. It was the first successful pass play into the

end zone made against the Loggers all year.

In the fourth quarter PLU attacked with quarterback Bob Batterman at the helm, he hit Les Rucker with a 24-yard pass and then connected with Mike McKay on a 19-yard pass play. Batterman carried the ball through the Logger defense for the final 10 yards and the score.

UPS gave PLU a final threat when Maddocks hit Peyton with two successive tosses of 17- and 46-yards to move to the PLU 9-yard line but a clipping penalty sent them back to the PLU 24. Three incomplete passes and a four-yard loss turned the ball back to the Lutes as the time ran out.

PLU dominated the game by out-downing the Loggers 16-7 and outrushing them 138-50. The win was the first of six straight in a drive that was to carry PLU to the Evergreen Conference throne in their last season of EvCo play.

LUTES SNAP LOGGER WIN STREAK IN 1974

PLU snapped the eight game Logger win streak against them in their 38-27 victory in 1974. PLU forced UPS into an early catch-up role when PLU scored twice in two minutes.

UPS' Doug Gall rushed 22 times for 168 yards and two touchdowns while quarterback Clay Angle added 110 yards in 12 carries and two touchdown passes to Rich Arena.

PLU quarterback, Rick Finseth made 11 completions in 19 tosses 3 of which were touchdowns. PLU scored again late in the game on a Les Higgins 43-yard field goal which broke the school record.

WHAT'S IN STORE FOR 1984?

The 1984 UPS squad will build from the foundation laid by the 1983 Evergreen Conference Champion team. Eighteen of last year's players were lost to graduation so this year's team will be quite young in some areas and yet strong in others. The Loggers plan to use the experiences gained from last year's Evergreen competition as a guide to see them through an equally rewarding season this year.

The emphasis for PLU this year will be on defense. The Lutes lost their starting backfield to graduation and will have to undergo a major rebuilding job to replace these vacant positions. Eight starters return from the stop-squad ranked fourth nationally against the rush. The Lutes begin the 1984 season coming off of a successful 1983 campaign, they finished second nationally in the NAIA.



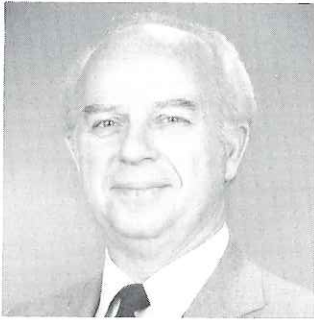
AND PIZZA KITCHEN

6430-6th Ave.
Tacoma

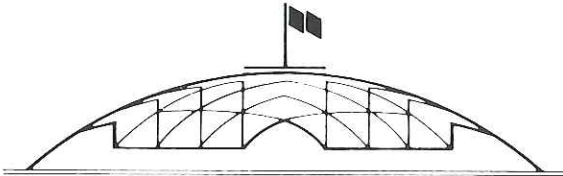
PIZZA TO GO
and
WE DELIVER
5-11
North End

564-7788

Tacoma Athletic Commission



*Bud Barnes
President*



*Celebrating 40 Years Of Dedication
To Sports And Civic Betterment*

Johnny's Dock Restaurant

1900 East D
City Waterway

627-3186



gilchrist buick

buick • isuzu • peugeot
New Cars — Used Cars
Service — Parts — Body Shop

6004 South Tacoma Way • Tacoma, Wash. 98409 • Phone 474-0645

CLIFF OLSON: FATHER OF PLU SPORTS

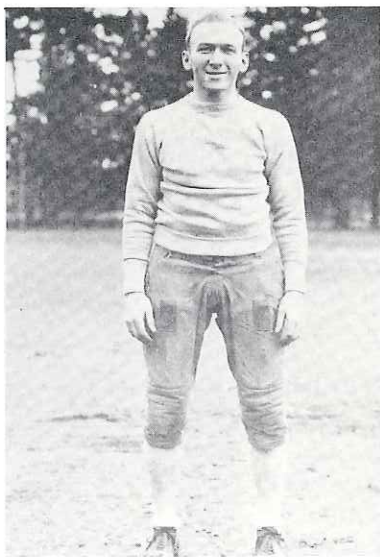
Most people recognize Cliff Olson's name after having watched basketball games or graduated from high school in his namesake auditorium. Behind the name is more than the man who was formerly the PLU Athletic Director, but also the father of PLU sports.

Olson came to Pacific Lutheran University in 1929 and remained on campus until 1948 as the Lute's Athletic Director and coach of football, basketball, baseball, golf, tennis, and track. Not only did he dominate PLU athletics but also small college athletics in the Northwest.

Olson's greatest achievement is when he coached the PLU Knight football team. His squad practiced on a rocky, dirt field called "Parkland Pebbles," behind Harstad Hall on campus, which was entirely inadequate for the intercollegiate program he had in mind.

The squad even passed the hat at football games at old Lincoln Bowl to raise enough money to help finance the athletic program Olson intended to build.

In the first season, Olson's football team beat the University of Puget Sound reserves twice and Bellarmine High School once. It lost to Lincoln, Stadium and Centralia Junior College.



Olson as a player

By the time Olson left Parkland, he had established PLU's athletic program by producing two All-Americans, Marv Harshman and Marv Tommervick, and leading the Lutes through an eight game winning streak (1939-1941) with two wins over a national power, Gonzaga.

PLU record books list Olson's football record as having won 64, lost 33, and tied six including the school's first undefeated 8-0 won-lost record. Cliff Olson did more than coach winning teams, nonetheless. He had a pronounced effect on the lives of players, families, and friends who came in contact with him.

"Cliff drove us hard; himself harder," Marv Harshman, now University of Washington basketball coach, once said. "He was a difficult man to get to know. But we all loved him, and we played our hearts out for him."

"When you played for him, the thing that impressed you the most was how physical he was and how intent he was about everything he did, even the simple things like calisthenics and getting ready for practice," he said.

Harshman added, "the thing that has stuck with me through my coaching career was his concern about the individual. The game was important to him, naturally. He was extremely competitive, but no game ever superceded any player.

"At the time I played for him," he said, "we always felt Cliff was fair but extremely tough, a genuine taskmaster."

Harshman said Olson was tough to get to know, "but by the time we were seniors, we found what a terrific friend he was.

"Money was a tough situation when I was in school," he said, "but Cliff kept digging down in his pocket to help some poor boy stay through the semester. You never read this side of the man in the newspaper."

If current students could have seen Cliff Olson in action, they would have seen him leaping around on the sidelines during a game, hugging players, shouting instructions and encouragement.

Olson expected a lot from his players, from being well-groomed and neat to being decent and humble. "Lots of us feel we wouldn't have accomplished anything if it had not been for him," Harshman closed off.

Perhaps Cliff Olson's credo taught his players their most valuable lesson and that was "excellence." He said, "to be excellent was to be a winner both on and off the field." Cliff Olson certainly is the paragon of excellence, both as a coach and a man.



Cliff Olson

PLU STARTING LINEUP

OFFENSE

LE	88	Dean Tomlinson, 193, Sr, Puyallup (Rogers)
LT	70	Tim Larson, 210, Jr, Seattle (Shorewood)
LG	62	Bruce Larson, 223, Sr, Bellevue (Sammamish)
C	71	Syb Hiemstra, 220, So, Bellevue (Newport)
RG	56	Aaron Linquist, 219, Jr, Winnepeg (Fort Richmond)
RT	76	Mark Rill, 230, So, Port Orchard (South Kitsap)
RE	83	Randy Hamlin, 202, Sr, Colfax
QB	5	Jeff Shumake, 200, Sr, Sumner
RB	30	Steve Senna, 185, Jr, Olympia
RB	26	Jud Keim, 170, Jr, Federal Way
FB	46	Mark Helm, 195, Jr, Wenatchee

DEFENSE

LE	81	Steve Gibbs, 235, Jr, Redmond
LT	75	Tim Shannon, 240, Jr, Snohomish
RT	73	Mike Jay, 235, Jr, Lynnwood (Meadowdale)
RE	80	Jeff Elston, 218, Jr, Tacoma (Curtis)
LLB	10	Tom Hayes, 190, Sr, Tacoma (Lakes)
MLB	55	John Wolfe, 198, Fr, Puyallup (Rogers)
RLB	53	Mark Grambo, 190, Jr, Burlington
LCB	43	Mike Grambo, 175, Jr, Burlington
RCB	11	Mike O'Donnell, 165, Fr, Everett
S	7	Dave Malnes, 190, Jr, Lynnwood (Meadowdale)
S	4	Don Coltom, 190, Sr, Tacoma (Washington)

COACHING STAFF

Head Coach: Frosty Westering

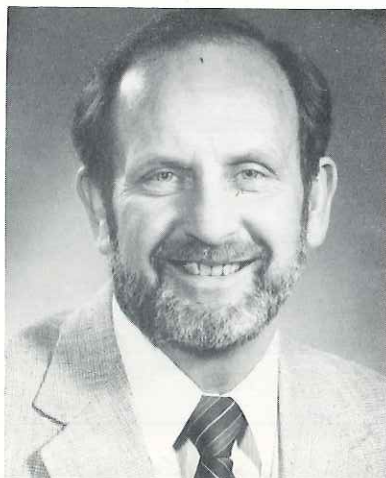
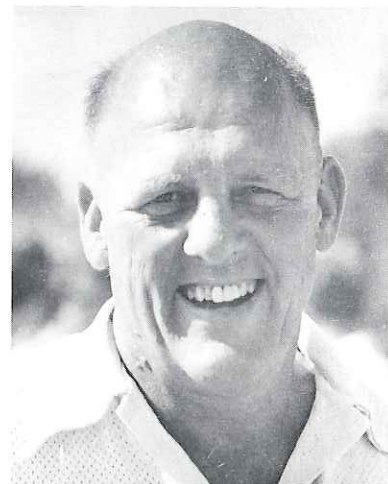
Defensive Coordinator: Paul Hoseth

Assistants: Scott Kessler, Scott Westering, Willis Freeman, Steve Ridgway and John Duppenhaler

Head Trainer: Gary Nicholson

FROSTY WESTERING

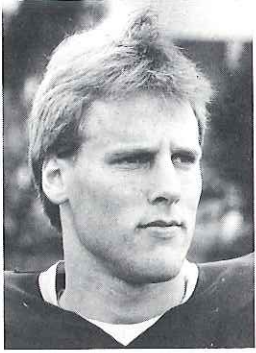
Frosty Westering, Lute head football coach has compiled a 92-27 record in his 12 year stay at PLU. He has been named NAIA Division II coach of the year, earning six district and three regional coach of the year awards. He led the 1980 team to a national championship and last year's team to a second place finish in the NAIA Division II. In his 12 years, Westering has tallied a 2-7 record against the Loggers.



DR. DAVID OLSON

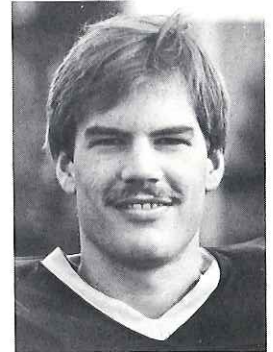
Dr. Olson is also the Dean of the School of Physical Education and has been at PLU since 1968. He is the first Vice-President of the National Association of Intercollegiate Athletics (NAIA). He was one of five United States Educators invited to the International Olympic Academy Educationists Session in Olympia, Greece to discuss amateur sports ideals.

1984 PLU CAPTAINS



DON COLTOM—Defensive Back
6'2", 190 lbs., Tacoma (Washington HS)

Coltom is a senior Lute, sweeping first-team all conference, all-district, and Little All-Northwest honors as a safety. He was named to the 1983 NAIA All-America second team.



RANDY HAMLIN—Offensive End
6'2", 202 lbs., Colfax

In his junior year, Hamlin hauled 59 passes for 764 yards and 10 touchdowns. The senior was named to the first team all-conference and second team Little All-Northwest in 1983.



TOM HAYES—Defensive Back
5'10", 190 lbs., Tacoma (Lakes HS)

Senior veteran Hayes, was named by the NAIA as the most valuable defensive player in the national title game with 12 tackles, including a quarterback sack, blocked a P.A.T. attempt, intercepted two passes, and tipped a pass to a teammate.



BRUCE LARSON—Offensive Guard
6'3", 220 lbs., Bellevue (Sammamish HS)

Larson was the first team pick on the 1983 all-conference, all-district, and Little All-Northwest squads. The senior was also named as an honorable mention All-America.

3 Great Tacoma Institutions PLU, UPS and SSB

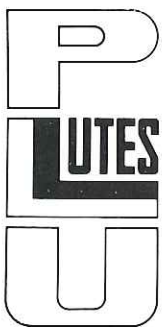
STATE SAVINGS BANK

Home Office: 955 Tacoma Avenue South • 272-5155

PLU ROSTER

NO.	NAME	POS	HT	WT	YR	HOMETOWN/HIGH SCHOOL	NO.	NAME	POS	HT	WT	YR	HOMETOWN/HIGH SCHOOL
2	Darin Ringenbach	DB	5-11	195	So	Federal Way (Jefferson)	54	Beau Shahan	DE	6-3	210	So	Billings, MT (West)
4	Don Coltom*	DB	6-1	190	Sr	Tacoma (Washington)	55	John Wolfe	LB	6-0	198	Fr	Puyallup (Rogers)
5	Jeff Shumake	QB	6-2	200	Sr	Sumner	56	Aaron Linquist	G	6-1	219	Jr	Winnepeg (Fort Richmond)
6	Pat O'Grady	K	5-7	175	Jr	Auburn (Green River CC)	60	Kevin Gabelein	LB	5-11	210	Fr	Seattle (King's)
7	Dave Malnes	DB	6-2	190	Jr	Lynnwood (Meadowdale)	62	Bruce Larson*	G	6-3	223	Sr	Bellvue (Sammamish)
8	Lee Sherman	QB	6-0	170	Fr	Oak Harbor	63	Dave Chun	G	5-10	200	Sr	Kaneohe, HI (Iolani)
9	Mark Foege	K	5-11	172	Jr	Tacoma (Bellarmine)	65	Jeff Crockett	T	6-4	205	Fr	Bothell (Inglemoor)
10	Tom Hayes*	LB	5-10	190	Sr	Tacoma (Lakes)	66	Sam Kurle	G	6-2	205	Fr	Puyallup
11	Mike O'Donnell	DB	5-9	165	Fr	Everett	70	Tim Larson	T	6-1	210	Jr	Seattle (Shorewood)
14	Jeff Yarnell	QB	6-3	175	Fr	Medford, OR	71	Syb Hiemstra	C	6-2	220	So	Bellevue (Newport)
15	Brian Moore	DB	6-0	180	Jr	Vancouver (Hudson's Bay)	72	Paul Baker	T	6-4	230	So	Puyallup
18	Kevin Johnson	RB	5-9	165	So	Colfax	73	Mike Jay	DT	6-1	235	Jr	Lynnwood (Meadowdale)
20	Shawn Langston	DB	6-1	175	Fr	Puyallup (Rogers)	74	Chris Lyden	DT	6-0	225	Jr	Tacoma (Foss)
21	Dave Templin	DB	5-10	170	Sr	Tacoma (Washington)	75	Tim Shannon	DT	6-3	240	Jr	Snohomish
22	Jonas Compton	DB	5-8	167	So	Tacoma (Clover Park)	76	Mark Rill	T	6-2	230	So	Port Orchard (So. Kitsap)
23	Harvey Wallace	DB	5-10	180	Fr	Tacoma (Spanaway Lake)	77	Tad Arstein	DT	6-2	220	So	Camarillo, CA (Rio Mesa)
24	Scott Elston	DB-K	6-0	172	Fr	Klamath Falls, OR	78	Curt Christiansen	DT	6-3	220	Sr	Palmer, AK
25	Craig Puzey	FB	6-2	195	So	Clatskanie, OR	80	Jeff Elston	DE	6-2	218	Jr	Tacoma (Curtis)
26	Jud Keim	RB	5-9	170	Jr	Federal Way	81	Steve Gibbs	DE	6-4	235	Jr	Redmond
28	Erik Krebs	RB	5-6	167	Fr	Walla Walla	82	Jeff Gates	E	6-4	205	So	Kennewick (River View)
29	Brian Olsen	DB	6-1	170	Fr	Port Orchard (So Kitsap)	83	Randy Hamlin*	E	6-2	202	Sr	Colfax
30	Steve Senna	RB	5-11	185	Jr	Olympia	84	Mark Miller	E	6-4	203	Fr	Tacoma (Washington)
32	Greg Kennedy	RB	5-10	170	Fr	Portland (Port. Christian)	85	Dave Mangum	E	6-2	202	Fr	Boise, ID (Capital)
33	Duane Smith	LB	6-0	195	So	Oak Harbor	86	Kirk Westre	E	6-2	205	Sr	Lake Forest, IL
34	Todd Moseson	RB	6-2	205	Fr	Puyallup (Rogers)	87	Steve Welch	E	6-1	180	So	Seattle (Ingraham)
36	Scott Schaefer	RB	6-0	188	Fr	Issaquah	88	Dean Tomlinson	E	6-1	193	Sr	Puyallup (Rogers)
38	Bret Macrae	DB	6-0	170	Fr	Kent (Kent Meridian)	89	Jon Kral	E	6-3	190	Fr	Olympia (No. Thurston)
40	Dave Hillman	RB	6-0	175	Fr	Bigfork, MT	90	Doug Zoutte	DE	6-1	195	Sr	Tacoma (Wilson)
42	Craig Mathiasen	DB	5-10	185	Fr	Puyallup	91	Tyler Trumbull	LB	6-3	200	Fr	Boardman, OR
43	Mike Grambo	DB	5-10	175	Jr	Burlington		Bob Jagels	LB	6-1	215	So	Eastsound (Orcas Island)
44	Drex Zimmerman	DB	6-1	187	Jr	Edmonds		Erik Johnson	T	6-6	229	Fr	Santa Clara, CA (Cupertino)
46	Mark Helm	FB	6-0	195	Jr	Wenatchee		Terry Marks	G	5-7	180	Fr	Puyallup
50	Keith Krassin	LB	6-1	198	Fr	Everett		Steve McCullough	C	6-0	200	Fr	Port Angeles
51	Ken Stewart	LB	6-0	195	Fr	Everett (King's)		Tom Napier	RB	5-10	175	Fr	Longview (Kelso)
52	Nate Tynes	C	6-0	225	Fr	Gig Harbor		Ross Pearson	T	6-2	200	Fr	Lynnwood
53	Mark Grambo	LB	6-0	190	Jr	Burlington							

* Captains



PEPSI

THE CHOICE OF

UPS ROSTER

NO.	NAME	POS	HT	WT	YR	HOMETOWN/HIGH SCHOOL	NO.	NAME	POS	HT	WT	YR	HOMETOWN/HIGH SCHOOL
1	Chris Johnston	RB	5-11	170	Fr	Chehalis (W.F. West)	62	Brent Faulkner	OL	6-4	217	Sr	Prosser (Prosser)
6	Steve Burrato	QB	5-11	173	Fr	Boise, ID (Borah)	63	John Gordon	OL	6-1	207	Sr	Renton (Tahoma)
7	Chris Bowlin	QB	6-3	180	Fr	Tacoma (Curtis)	64	Ron Cardwell	OL	6-2	235	Fr	Centralia (Centralia)
8	Marc Morris	QB	5-10	165	Fr	Tacoma (Bellarmine)	65	Mike O'Brien	DE	5-11	165	So	Tacoma (Wilson)
9	Dick Crabb	LB	6-1	217	Jr	Cheney (Cheney)	66	Brian Webster	LB	6-2	208	Jr	Kirkland (Juanita)
10	Brad Gobel	DB	5-8	162	Sr	Tacoma (Mt. Tahoma)	67	Grant Allen	LB	5-11	182	So	Seattle (Tyee)
11	Jason McDowell	RB	5-11	190	Fr	Hawaii (Waimea)	68	Mike Vincent	OL	6-2	225	So	Yakima (Davis)
12	Scott Minnix	DB	5-7	162	Fr	Seattle (Shoreline)	69	S. Poomaihealani	DE	6-1	206	Jr	Kaneohe, HI (Kamehameha)
14	Roy Medley	QB	6-2	193	Jr	Issaquah (Liberty)	70	Kalani Voeller	DL	6-1	251	Sr	Kaneohe, HI (Damian)
15	Jim Chamberlin	DB	5-11	180	Sr	Olympia (Capital)	71	LeRoy Hynning	OL	6-1	218	So	Vancouver (Columbia River)
20	R. LaMonica	DB	5-11	186	Jr	Tacoma (Mt. Tahoma)	72	David Hombach	TE/OL	6-2	221	Jr	Tacoma (Lakes)
21	Joe Logan	DB	6-1	199	Jr	Belfair (North Mason)	73	Greg Hargrave	DL	6-0	220	So	Tumwater (Tumwater)
22	Jeff Austin	RB	6-1	208	Jr	Port Angeles (Pt. Angeles)	74	David Hyttinen	DL	6-1	227	Jr	Federal Way (Decatur)
23	Brian Burdick	WR	5-10	168	So	Tacoma (Wilson)	75	Paul Akers	DT	6-2	255	Sr	Vancouver (Columbia River)
24	Tracy Merrill	DB	5-10	174	Fr	Fife (Fife)	76	Brad Bennett	OL	6-4	224	Sr	Bellevue (Newport)
25	Todd McGrady	RB	5-11	211	Sr	Federal Way (Federal Way)	77	Pete Kane	DE	6-3	190	Fr	Portland, OR (Centennial)
26	Brian Hammock	WR	6-0	177	Fr	Montesano (Montesano)	78	Dallas Maynard	DL	6-5	211	Jr	Port Angeles (Pt. Angeles)
27	Joe Bolewicz	DB	5-11	170	Jr	Monument, CA (Alameda)	79	Bret Tomlinson	DL	6-1	185	Fr	Tacoma (Wilson)
28	Scott Henry	WR	5-11	170	Jr	Tacoma (Washington)	80	Paul Hert	WR	6-1	175	Jr	Bellevue (Bellevue)
29	Mike Moore	DB	5-9	172	Sr	Poulsbo (No. Kitsap)	82	Jim Cappa	TE	6-4	208	Sr	Maple Valley (Tahoma)
30	Jim Beckman	K	5-10	165	So	Puyallup (Rogers)	83	Mike Boone	WR	5-11	158	Jr	Prosser (Prosser)
31	Glen Takara	DB	5-8	167	Jr	Aeia, HI (Iolani)	84	Greg Finkbonner	TE	6-1	177	So	Ferndale (Ferndale)
32	Scott Lane	DB	5-11	169	So	Conway (Mt. Vernon)	86	Chris Reiten	WR	6-0	170	So	Beaverton, OR (Sunset)
33	Mike Oliphant	OB	5-11	170	Fr	Auburn (Federal Way)	87	Randy Williams	DB	5-10	165	Jr	Kirkland (Juanita)
38	Rich Sassara	LB	6-0	190	So	Burton (Vashon)	88	Curt Marble	TE	6-1	181	Fr	Mt. Vernon (Mt. Vernon)
40	Cliff Wade	DE	6-0	173	So	Tacoma (Lakes)	89	Ukio Howell	WR	5-7	142	Fr	Tacoma (Washington)
41	Tim Martin	DB	5-10	160	Fr	Elma (Elma)	90	Russell Jenkins	WR	5-9	167	Sr	Bellevue (Bellevue)
44	Jeff Schetter	DB	5-9	165	Fr	Portland, OR (Reynolds)	91	Jack Jones	WR	5-6	138	So	Westport (Ocosta)
45	Alain Patton	RB	5-8	187	So	Tacoma (Mt. Tahoma)							
50	Lonnie Tweet	DL	6-0	205	Jr	Seattle (Foster)							
51	Dennis Frett	DE	6-0	195	Fr	Tacoma (Bellarmine)							
52	Tim Manke	LB	5-10	182	So	Tacoma (Bellarmine)							
53	Charlie Huber	LB	5-8	181	So	Woodinville (Blanchett)							
54	C. Schebel	OL	6-3	228	So	Lynden (Lynden)							
55	Wendell Hynning	OL	6-1	218	So	Vancouver (Columbia River)							
58	Jon Hearron	DE	6-3	212	Jr	Yakima (Eisenhower)							
60	David Gonzales	DL	5-10	216	So	Fairbanks, AK (West Valley)							
61	Monte Moss	LB	5-11	193	Fr	Toledo							

DUPLICATE NUMBERS

12	David Metzger	OB	5-9	165	Fr	Gooding, ID (Gooding)
28	Shad Johnson	S	5-10	165	Fr	Tonasket (Tonasket)
54	Dan Douglas	LB	5-11	190	Fr	Hazleton, ID
60	Steve Gleason	DE	5-11	194	So	Tacoma (Foss)
65	Bruce Nicholson	OL	5-10	190	Fr	Alaska (Shawnee Mission)
80	Brian Brittan	DE	6-1	178	Fr	Seattle (Mt. Rainier)
82	Andy Meek	DB	6-0	168	So	Richland (Hanford)



A NEW GENERATION

The Pepsi Cola - Seven-Up Bottling Co. of Tacoma
 3101 South Pine • Tacoma, Washington 98409 • (206) 383-3492

UPS STARTING LINEUP

OFFENSE

LE	89	Ukio Howell, 142, So, Tacoma, (Washington)
LT	72	Dave Hombach, 221, Jr, Tacoma (Lakes)
LG	71	Leroy Hyyning, 218, So, Vancouver (Columbia River)
C	63	John Gordon, 207, Sr, Renton (Tahoma)
RG	68	Mike Vincent, 225, So, Yakima (Davis)
RT	62	Brent Faulkner, 217, Sr, Prosser (Prosser)
RE	84	Greg Finkbonner, 177, So, Ferndale (Ferndale)
QB	14	Roy Medley, 193, Jr, Issaquah (Liberty)
RE	23	Brian Burdick, 168, So, Tacoma (Wilson)
P	67	Grant Allen, 182, So, Seattle (Tyee)
HB	25	Todd McGrady, 211, Sr, Federal Way (Fed. Way)
FB	22	Jeff Austin, 208, Jr, Port Angeles (Pt. Angeles)
K	30	Jim Beckman, 165, So, Puyallup (Rogers)

DEFENSE

DE	58	Jon Hearron, 212, Jr, Yakima (Eisenhower)
DT	70	Kalani Voeller, 251, Sr, Kaneohe, HI (Damian)
NG	50	Lonnie Tweet, 205, Jr, Seattle (Foster)
DT	75	Paul Akers, 255, Sr, Vancouver (Columbia River)
DE	65	Mike O'Brien, 165, So, Tacoma (Wilson)
SLB	9	Dick Crabb, 217, Jr, Cheney (Cheney)
LB	52	Tim Manke, 182, So, Tacoma (Bellarmine)
CB	20	Rich LaMonica, 186, Jr, Tacoma (Mt. Tahoma)
M	27	Joe Bolewicz, 170, Jr, Monument, CA (Alameda)
S	10	Brad Gobel, 162, Sr, Tacoma (Mt. Tahoma)
CB	31	Glen Takara, 167, Jr, Aiea, HI (Iolani)

COACHING STAFF

Head Coach: Ron Simonson

Coaches: Myles Corrigan, Tom Mays, Paul Wallrof

Assistant Coaches: Kevin Reimer, Todd deCarteret, Craig Morse

Trainer: Jim "Zeke" Schuldt



RON SIMONSON

Ron Simonson, Logger head football coach for six years, will bring his 48-14 record into a season that is looking to defend their 1983 Evergreen Conference Championship. In his 11 years at UPS, he has successfully led the Loggers through five seasons at the NCAA Division II level and last season in NAIA Division II. During his reign as head coach, Simonson has chalked up a 2-1 record against PLU.

DR. RICHARD ULRICH

Dr. Ulrich is the Logger's new Athletic Director and comes to the Northwest from Adam State College in Alamosa, Colorado. He was the director of men's and women's intercollegiate sports and the department chair of Health and Physical Education for 11 years. He also was the head wrestling coach, head and assistant football coach. Dr. Ulrich was chosen as an Outstanding Educator of America in 1975.



1984 UPS CAPTAINS

DICK CRABB—Linebacker
6'1", 216 lbs., Cheney

Crabb was injured much of the year, but the fourth year junior is ready to return for the 1984 season. Coach Simonson described him as an outstanding leader. In pre-season training, Crabb is benching 315 pounds.

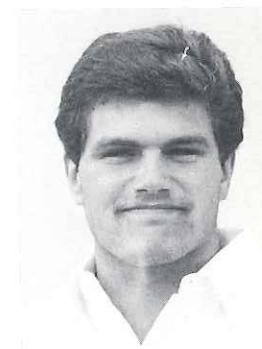


BRAD GOBEL—Defensive Back
5'8", 169 lbs., Tacoma (Mt. Tahoma HS)

Gobel led his high school team to a state championship and is returning for the Loggers as #2 in interceptions. He started his college career as a quarterback, switched to receiver and then to safety. Last year he was named as honorable mention All-Conference Defensive Back.

DAVID HOMBACH—Offensive Lineman
6'3", 234 lbs., Tacoma (Lakes HS)

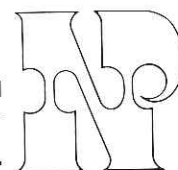
Hombach enters this season as a junior and as Simonson described him, "a strong leader." In his pre-season performance, Hombach benches 335 pounds.



ROY MEDLEY—Quarterback
6'2", 199 lbs., Issaquah (Liberty HS)

Medley is a Logger third year quarterback. Simonson said he is a hard-working athlete and a veteran leader on the team.

NORTH PACIFIC BANK
THE BUSINESS BANK



DIAMOND JIM'S

RESTAURANT

2653 N. Pearl St. (Westgate Shopping Ctr.) 752-5020

ANNOUNCES

7 NIGHTS A WEEK DINNER FOR TWO

JUST

\$13.95

Any combination from the choices of
Filet Mignon, Sirloin Steak, Teriyaki Chicken,
or Fresh Halibut
Comes complete with our "One of a Kind" salad
bar and choice of baked potato, rice pilaf,
spaghetti, or steak house fries.

"Come on in & enjoy a great dinner!"

Mon.-Thurs. 5 p.m.-10 p.m., Fri. & Sat. 5 p.m.-11 p.m., Sun. 4 p.m.-10 p.m.

We Also Have Special Banquet Room For Up
To 100 People (With Special Banquet Menu)

Open for Lunch Mon.-Fri. 11 a.m.-4:30 p.m.,
Sat. noon-4:30 p.m.

ENJOY LIVE ENTERTAINMENT

Tues.-Sat. 9-1:30 a.m.

Also Enjoy Same Menu at:

Jim Moore's in Burien 914 S.W. 152nd 244-0967
Diamond Jim's in Federal Way 1616 S.W. 325th 838-1440



Cammarano Brothers

WE'RE #1 IN T-SHIRTS *



* ALSO: SHORTS—SWEATSHIRTS AND PANTS—JERSEYS—JACKETS—
SOCKS—CAPS. PLUS LADIES TOPS AND SHORTS IN THE LATEST
FASHION COLORS AND STYLES. ALSO CHILDRENS AND JR. SIZES . . .

. . . AND MORE!

UPS BOOKSTORE

15th & LAWRENCE
756-3270

WILL ACCEPT VISA AND MASTERCARD

HOURS: 8:30-4:30
MONDAY-FRIDAY

JOHN HEINRICK: "DEAN OF COACHES"

"I've had great coaches in my lifetime, but I have always called coach Heinrich, 'Coach,'" said Joe Stortini, Pierce County Council Member and District Chair, "He's the dean of coaches." The former University of Puget Sound quarterback claimed that out of the number of coaches in the Northwest today, the majority of them were players from the "coach" Heinrich days.

John Heinrich, former head football coach at UPS since 1948, outranks all other coaches in the state in years of service. In his 17 years at UPS, Heinrich's football teams won 88, lost 46, and tied 11. His lifetime coaching career is rooted in stays at Bellarmine and Stadium High Schools. From 1927 through 1961, Heinrich's gridiron career stretched over 38 seasons with a record between the three schools of 220-101-26.

"Two hundred football victories aren't the easiest thing in the world to come by," Heinrich once said. He went to UPS in 1947 as basketball coach and in 1948 added football and athletic directing to his duties. During his Logger coaching career, his football teams won or shared the Evergreen Conference championship five times.

Wins are not the only indicator of Heinrich's success as a coach. He was elected to the National Association of Intercollegiate Athletic Football Coaches Hall-Of-Fame in the charter group of five that joined in 1957. He was voted into the Pierce County Sports Hall-Of-Fame in 1959 and he was chosen as the first honorary coach of the Methodist University and College All-America squad in 1962.

Although the entirety of Heinrich's awards and coaching endeavors surpass the previous list, his fame is echoed throughout the state as being the "epitome of coaches."

Heinrich had said, "sure, I advise my players to go into coaching if they are so inclined, but I also tell them that if they are not accomplishing their main job—helping youngsters become good citizens—they should get out within a few seasons."

He added, "my idea from the start was to be a teacher as well as a coach to make men out of kids, and it is a good feeling to know that you have done that."

Stortini said, "I learned to be a good person and I'm glad I had the opportunity to play four years of football and learn in his classes."

"Heinrich's philosophy was that he expected the best from you no matter if you were on the field or in class."

Stortini said the key to "Coach's" philosophy was that "he always taught us to win because when you play to win, you always do your best. But you never get hung up when you lose because you still learn from the experience."

Gary Hersey, who played basketball and football for two years as a Logger quarterback between 1947 and 1951, described Heinrich as stern but well respected.

Hersey also played at Stadium High School when Heinrich coached one of the Tigers' "unscored" upon football teams. Hersey said, "he was respected by his high school players as much as by the college players."

He recalled a story that exemplified the kind of respect Heinrich received. "In high school we (Stadium) had the tradition to play Lincoln at the end of the football season. The week before the big game, Heinrich told us that he didn't want to see us talking to any girls between then and game time. We did what he said and I didn't talk to my girlfriend during that whole week. You certainly wouldn't see that happening today."

Coach John Heinrich obviously impressed the young players who came in contact with him either during high school or college. If a phrase were to sum Heinrich's character as a coach and teacher it would be as Hersey said, "Heinrich is a great guy!"



Coach John Heinrich



The Northwest's Premier Recreation and Entertainment Facility.

OPEN 24 HOURS A DAY

Bowling 40 Brunswick Lanes
Restaurant Featuring breakfast lunch and dinner
Super Lounge with live music
Game Room & Casino
Sidewalk Cafe

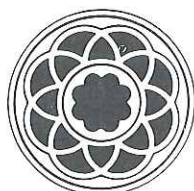
FREE COUPON

This coupon entitles bearer to one free game of recreational bowling at...



2200 Mildred West.

Located in the Fircrest University Place area just south of 19th on Mildred Street



University Center
PACIFIC LUTHERAN UNIVERSITY

Artist Series

SOAR WITH TODAY'S HOTTEST JAZZ GROUP!

free flight

"No walls exist for these innovators... a happy convergence of two valid musical idioms and four splendid talents, this is chamber music of the highest order."

Leonard Feather-LA Times-4/82

EASTVOLD AUDITORIUM 8 P.M.

October 3, 1984 \$5.00

Nendels Tacoma and Port-of-Tacoma Mom'll love it!

Next time the folks come in for a weekend visit, show them how clever their baby's become by booking their room at Nendels Motor Inns in Tacoma.

They'll love the big, comfy queen size beds, the in-room, first-run movies, the heated pool—and the reasonable room rates.

Impress your folks with your new social skills, your practical application of fiscal responsibility and thoughtful consideration to their comfort—and who knows what surprises may arrive in next week's mail!

Hospitality. And all the rest. Including mom's approval.

Nendels MOTOR INN

Port-of-Tacoma
 3518 Pacific Highway East
 Tacoma, WA 98424
 (206) 922-0550

Tacoma
 8702 South Hosmer
 Tacoma, WA 98444
 (206) 535-3100



24 HOUR CENTRAL RADIO DISPATCH



SHEPARD AMBULANCE INC

610 TACOMA AV S

SERVING GREATER TACOMA WITH PROFESSIONAL CARE

383-5416

WATTS 800-562-8478

TAC. 383-5022
SEA. 838-9803

TOTEM ELECTRIC

of TACOMA, Inc. Industrial and Commercial Contractors

EARL A. SMITH

2332 So. Jefferson Ave.
P.O. Box 1093
Tacoma, WA 98401



Knight, Vale & Gregory

Certified Public Accountants

First Interstate Plaza, Suite 1500
1201 Pacific Avenue
P.O. Box 1116
Tacoma, Washington 98401
Telephone 206-572-7111

- Management Support
- Financial Statements
- Tax Returns and Tax Planning

Tacoma/Seattle/Olympia

**The Toppers
Wish The Loggers
Success in the
1984-85 Season**
*Al Rainwater
President*

MAC

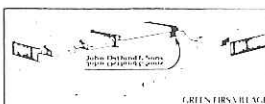
Tac: (206) 565-1919 Sea: 624-2199

- Advertising
- Printing
- Promotions
- Broadcasting

6906 27th West, Tacoma, WA 98466

A Family Shoe Store
in University Place

John Ostlund & Sons



GREEN FIRS VILLAGE
3812 Bridgeport Way W. • 564-SHOE

SWEATERS • GIRLS' JACKETS • CHEER • PEP • DRILL • BAND



51st ANNIVERSARY

DOT SNYDER
(206) 627-6581

746 BROADWAY, TACOMA, WASHINGTON 98402

Serving PLU For Over
35 Years

GO LUTES

JOHNSON'S PARKLAND DRUGS

PHONE 537-0221 210 GARFIELD PARKLAND, WASHINGTON

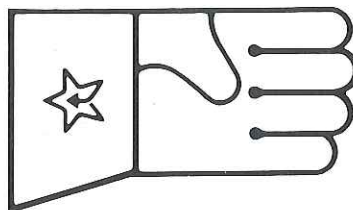
LARRY K. HEGGERNESS, D.D.S.

GENERAL DENTISTRY & ORTHODONTICS

- TWO CONVENIENT LOCATIONS •

2300 UNION BLDG.
2302 SO. UNION, SUITE 2
TACOMA, WA 98405
752-5933

202 PACIFIC, SUITE 101
BREMERTON, WA 98310
479-8822



NORTH STAR GLOVE CO.
"Made in Tacoma since 1910"

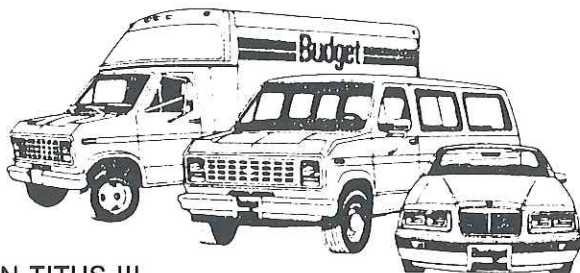


PLUTES





BUDGET LIVES UP TO ITS NAME.



LEON TITUS III
BILL HYATT

GREAT RATES! GREAT SERVICE!

Budget

car and
truck rental

Downtown
616 Broadway
627-7141

Lakewood
10002 Lakeview
582-5900

Downtown
1305 Pacific Ave.
383-4944

TEMPO

auto glass & upholstery

*Auto Glass • Residential & Commercial Glass
Custom Glass & Mirrors • Vinyl Tops
Auto Upholstery & Carpets • Boats*

- Service
- Experience
- Integrity

DOWNTOWN

627-1600

572-7800

605 SAINT HELENS

SOUTH TACOMA

474-2600

474-4050

6621 S. TACOMA WAY.

PARKLAND

531-4200

537-8301

1111 PACIFIC AVE.

PUYALLUP

845-0600

845-1515

401 MERIDIAN N.

UPS-PLU 1984 FOOTBALL SCHEDULE

UPS Schedule

DATE	OPPONENT	PLACE	TIME
Sept. 15	Linfield College	Home	1:00
Sept. 22	Pacific Lutheran University	Tacoma Dome	7:30
Sept. 29	Whitworth College	Away	
Oct. 6	Western Oregon	Away	
Oct. 13	Oregon Tech	Home	1:00
Oct. 20	Southern Oregon	Away	
Oct. 27	Central Washington	Home	1:00
Nov. 3	Western Washington	Away	
Nov. 10	Simon Fraser	Away	
Nov. 17	Eastern Oregon	Home	1:00

PLU Schedule

DATE	OPPONENT	PLACE	TIME
Sept. 8	Alumni	Franklin Pierce	7:30
Sept. 15	Simon Fraser	Burnaby, B.C.	7:30
Sept. 22	Puget Sound	Tacoma Dome	7:30
Sept. 29	Western Washington	Franklin Pierce	7:30
Oct. 6	Central Washington	Franklin Pierce	1:30
Oct. 13	Pacific	Franklin Pierce	1:30
Oct. 20	Linfield	McMinnville	1:30
Oct. 27	Lewis & Clark	Franklin Pierce	1:30
Nov. 3	Willamette	Salem	1:30
Nov. 10	Whitworth	Lincoln Bowl	1:30

Master-Mac Printing

FORMERLY MASTER CRAFT PRINTING

564-9752

Now Located At
6906 27th St. W.
Tacoma, WA 98466

*Visual Communications through
Graphic Design and Printing*

DOMINO'S PIZZA DELIVERS™



DOMINO'S PIZZA

752-9653

North End

564-0974

West Side

473-4240

East Side

537-4611

Parkland

473-5450

South End

Limited delivery area.

© 1984 Domino's Pizza, Inc.

**Congratulations UPS-PLU
on your Annual Football Game.**