

REV NO	DATE	BY	DESCRIPTION

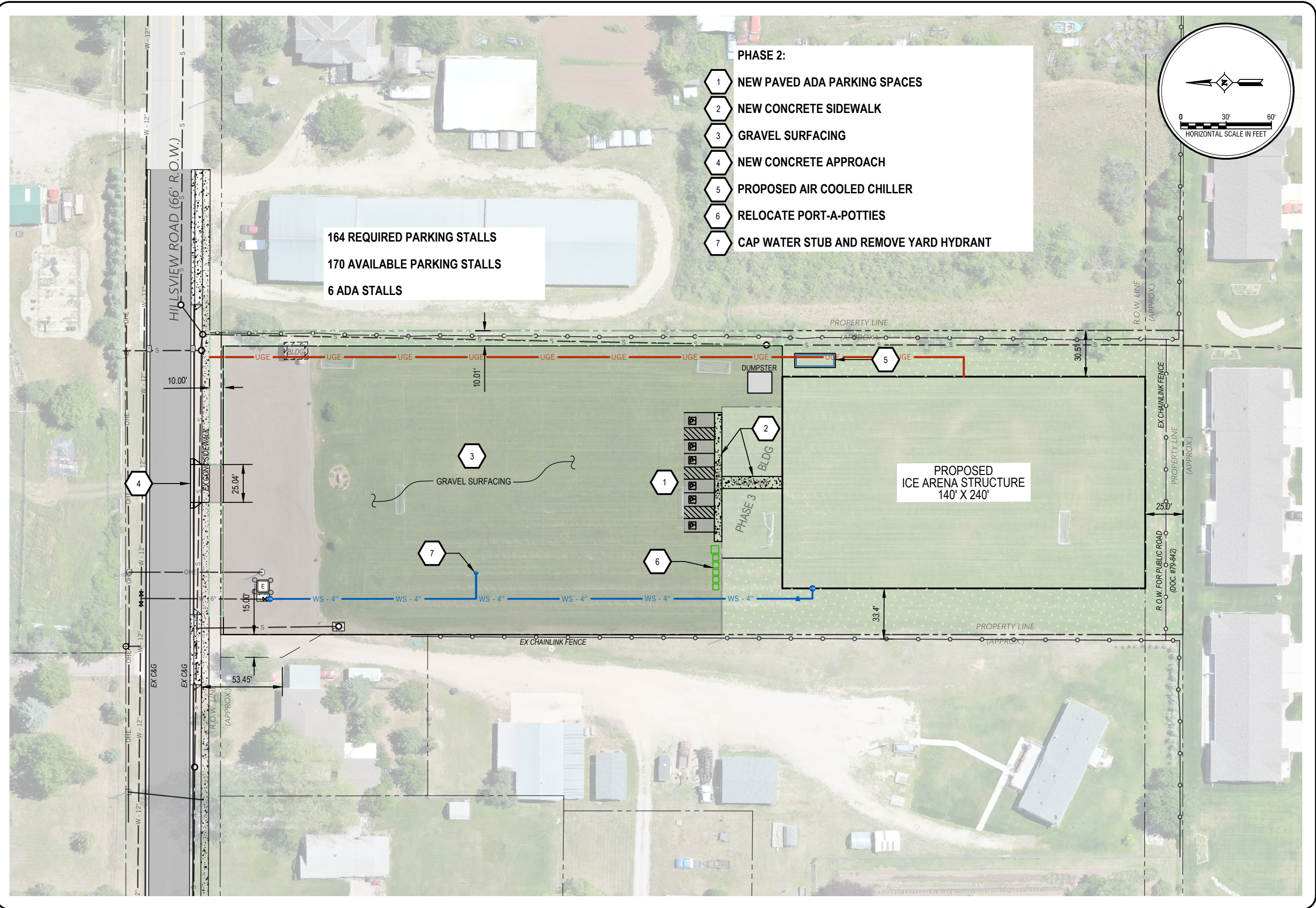
SPEARFISH ICE ARENA	
PROJECT OWNER	
PROJECT LOCATION	
<b>PRELIMINARY SKETCH PLAN - PHASE 1</b>	
DRAWN BY: _____	CHECKED BY: _____
SURVEYED BY: _____	DESIGNED BY: _____
PROJECT NO: WC24-06-094	DATE: _____

Interstate Engineering  
120 Industrial Drive, Suite 2  
PO Box 226  
Spearfish, SD 57783  
(605) 642.4772  
www.interstateeng.com



**INTERSTATE ENGINEERING**  
Professionals You Need. People You Trust.

SECTION
<b>G1</b>
1
SHEET NO.



- PHASE 2:**
- 1 NEW PAVED ADA PARKING SPACES
  - 2 NEW CONCRETE SIDEWALK
  - 3 GRAVEL SURFACING
  - 4 NEW CONCRETE APPROACH
  - 5 PROPOSED AIR COOLED CHILLER
  - 6 RELOCATE PORT-A-POTTIES
  - 7 CAP WATER STUB AND REMOVE YARD HYDRANT

164 REQUIRED PARKING STALLS  
 170 AVAILABLE PARKING STALLS  
 6 ADA STALLS

PROPOSED  
 ICE ARENA STRUCTURE  
 140' X 240'

REV NO	DATE	BY	DESCRIPTION

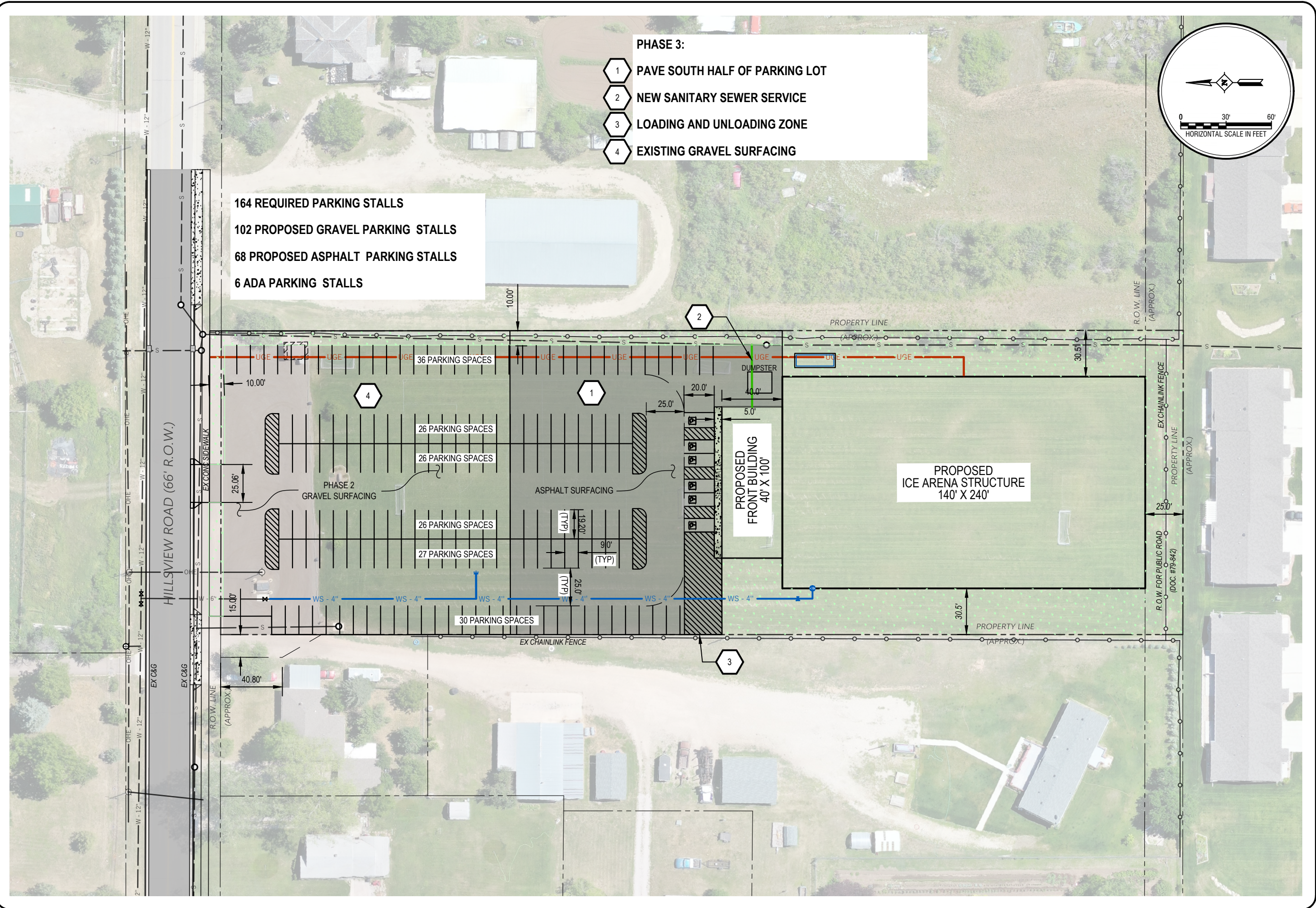
SPEARFISH ICE ARENA PROJECT OWNER	
PROJECT LOCATION	
<b>PRELIMINARY SKETCH PLAN - PHASE 2</b>	
DRAWN BY: _____	CHECKED BY: _____
SURVEYED BY: _____	DESIGNED BY: _____
PROJECT NO.: WC24-06-094	DATE: _____

Interstate Engineering  
 120 Industrial Drive, Suite 2  
 PO Box 226  
 Spearfish, SD 57783  
 (605) 642.4772  
 www.interstateeng.com



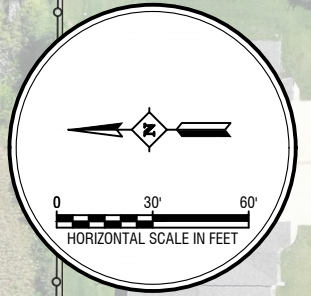
Professionals You Need. People You Trust.

SECTION
<b>G2</b>
<b>2</b>
SHEET NO.



- PHASE 3:**
- 1 PAVE SOUTH HALF OF PARKING LOT
  - 2 NEW SANITARY SEWER SERVICE
  - 3 LOADING AND UNLOADING ZONE
  - 4 EXISTING GRAVEL SURFACING

**164 REQUIRED PARKING STALLS**  
**102 PROPOSED GRAVEL PARKING STALLS**  
**68 PROPOSED ASPHALT PARKING STALLS**  
**6 ADA PARKING STALLS**



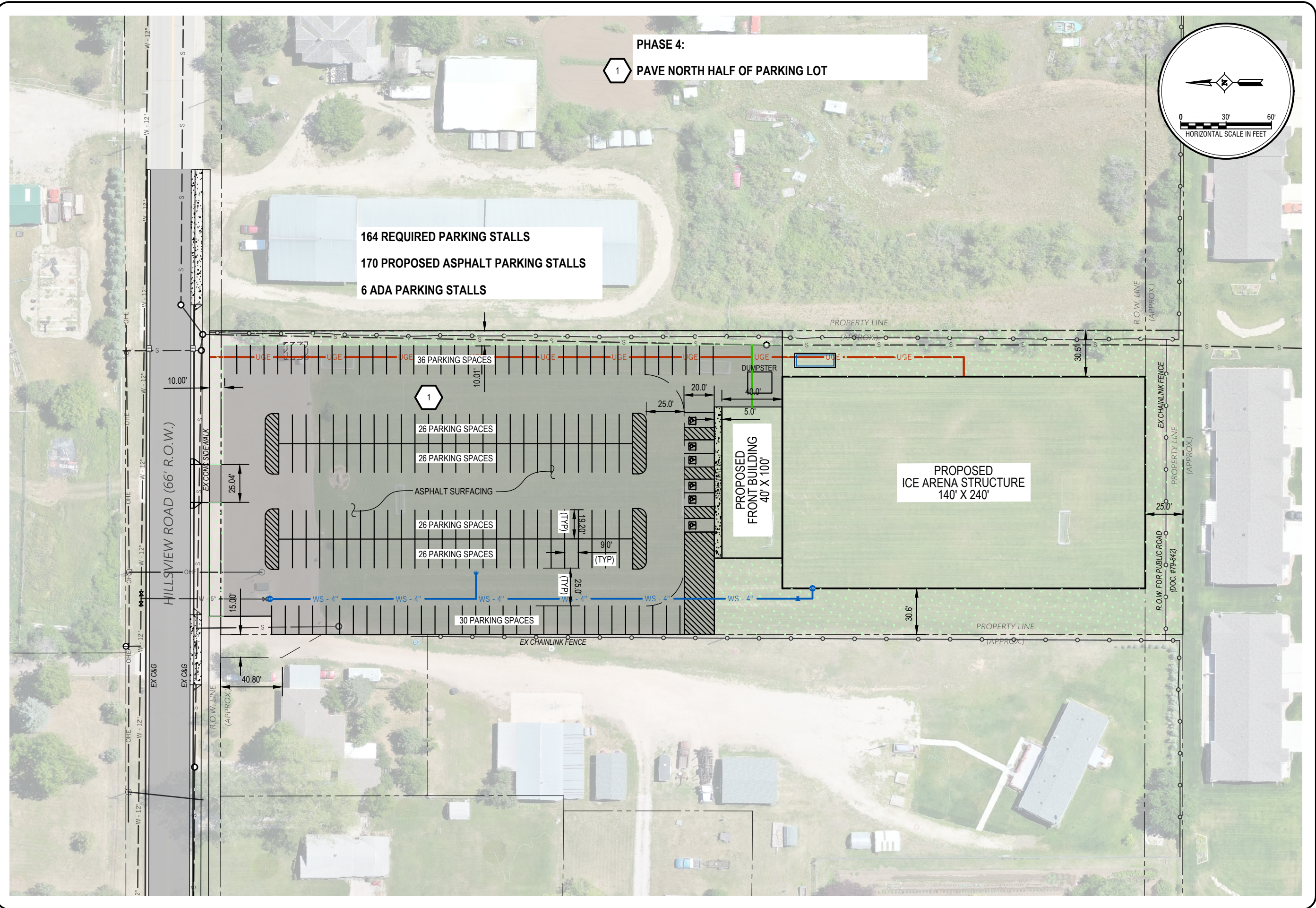
REV NO	DATE	BY	DESCRIPTION

SPEARFISH ICE ARENA  
 PROJECT OWNER  
 PROJECT LOCATION  
**PRELIMINARY SKETCH PLAN - PHASE 3**  
 DRAWN BY: \_\_\_\_\_ SURVEYED BY: \_\_\_\_\_ PROJECT NO.: WC24-06-094  
 CHECKED BY: \_\_\_\_\_ DESIGNED BY: \_\_\_\_\_ DATE: \_\_\_\_\_

Interstate Engineering  
 120 Industrial Drive, Suite 2  
 PO Box 226  
 Spearfish, SD 57783  
 (605) 642.4772  
 www.interstateeng.com

**INTERSTATE ENGINEERING**  
 Professionals You Need. People You Trust.

SECTION  
**G3**  
**3**  
 SHEET NO.



REV NO	DATE	BY	DESCRIPTION

SPEARFISH ICE ARENA	
PROJECT OWNER	
PROJECT LOCATION	
<b>PRELIMINARY SKETCH PLAN - PHASE 4</b>	
DRAWN BY: _____	PROJECT NO.: WC24-06-094
CHECKED BY: _____	DESIGNED BY: _____
	DATE: _____

Interstate Engineering  
 120 Industrial Drive, Suite 2  
 PO Box 226  
 Spearfish, SD 57783  
 (605) 642.4772  
 www.interstateeng.com

**INTERSTATE ENGINEERING**  
 Professionals You Need, People You Trust.

SECTION
<b>G4</b>
<b>4</b>
SHEET NO.