

EAST ALL-STARS



THE 37TH ANNUAL THE WISCONSIN BASEBALL COACHES ASSOCIATION ALL-STAR CLASSIC

FEATURING WISCONSIN'S FINEST SENIORS

2020
CANCELLED

THOUGH WE WERE UNABLE TO STAGE THIS ANNUAL EVENT IN 2020 DUE TO THE ONGOING PANDEMIC, THE WISCONSIN BASEBALL COACHES ASSOCIATION IS HONORED TO PICK 72 OF OUR FINEST SENIOR, BASEBALL-STUDENT ATHLETES.

TO BE CHOSEN, THE PLAYER'S COACH MUST BE A MEMBER OF THE WBCA AND NOMINATED BY HIS COACH.

CONGRATULATIONS TO EACH PLAYER ON HIS SELECTION AND WE TOO LAMENT THE LOSS OF THE 2020 SEASON.

HERE ARE THE EAST ALL-STARS:

EAST ALL-STAR SELECTION CHAIR: CHAD MONTEZ, WAUKESHA WEST



2020 WBCA EAST ALL-STARS

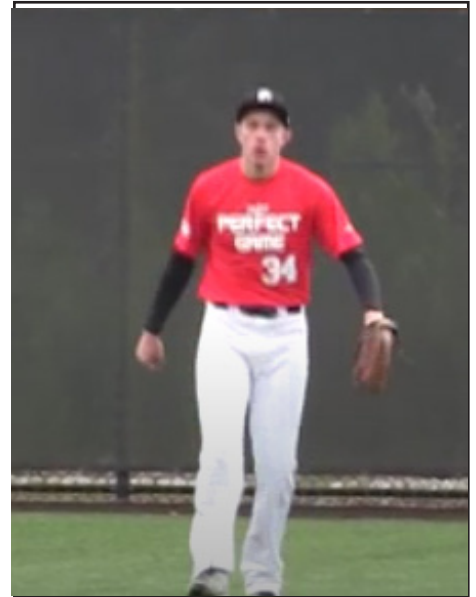



FRANKLIN SABRES

MITCHELL ALBA
34




MITCHELL ALBA
FRANKLIN SABRES
6'3" • 195 LBS • R/R
OUTFIELDER
SCHOOL ENROLLMENT: 1566
WBCA HIGH SCHOOL COACH: STEVE DROBOT
PLANS: EASTERN ILLINOIS
.375 AS A JUNIOR, 2ND TEAM ALL-SEC

WEST BEND WEST SPARTANS

LUKAS BROSKE
20



LUKAS BROSKE
WEST BEND WEST SPARTANS
6'5" • 205 LBS • R/R
INFIELDER
SCHOOL ENROLLMENT: 1204
WBCA HIGH SCHOOL COACH: DAN D'AMICO
PLANS: LAKELAND CC
.418 AVG
FIRST TEAM ALL CONFERENCE AS A JUNIOR




CATHOLIC MEMORIAL CRUSADERS

CHRIS BYHRE
18




CHRIS BYHRE
CATHOLIC MEMORIAL CRUSADERS
6'0" • 220 LBS • R/R
PITCHER
SCHOOL ENROLLMENT: 589
WBCA HIGH SCHOOL COACH: SEAN SMITH
PLANS: EASTERN KENTUCKY
.532 AVG, 24 RBI, 4 HR, 10 SB, 25 RUNS SCORED
4-1, 2.2 ERC, 31 IP, 60 K, 18 BB
FIRST TEAM ALL CONFERENCE




(Photo: Curt Hogg//Now/News Group)

2020 WBCA EAST ALL-STARS



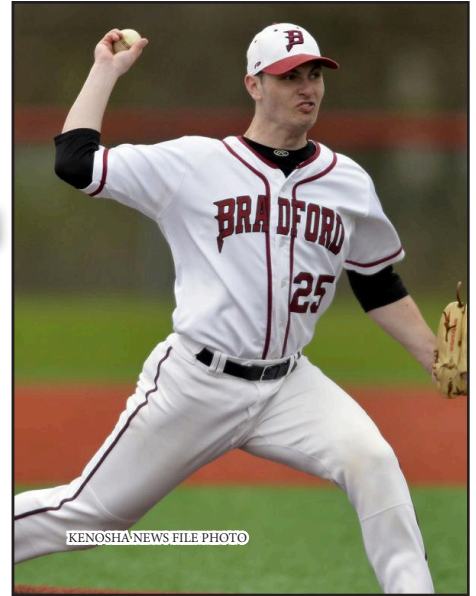
KENOSHA BRADFORD RED DEVILS

KENOSHA NEWS FILE PHOTO
NICK CAIRO
25



NICK CAIRO
KENOSHA BRADFORD RED DEVILS
6'2" • 205 LBS • R/R
PITCHER
SCHOOL ENROLLMENT: 1786
WBCA HIGH SCHOOL COACH: MATT LABUDA
PLANS: UW WHITEWATER

.306 AVG, 7 RBI, 9 RUNS SCORED
12-9, 2.52 ERA, 47 IP, 47 K, 8 BB
SEC 2ND TEAM ALL CONFERENCE



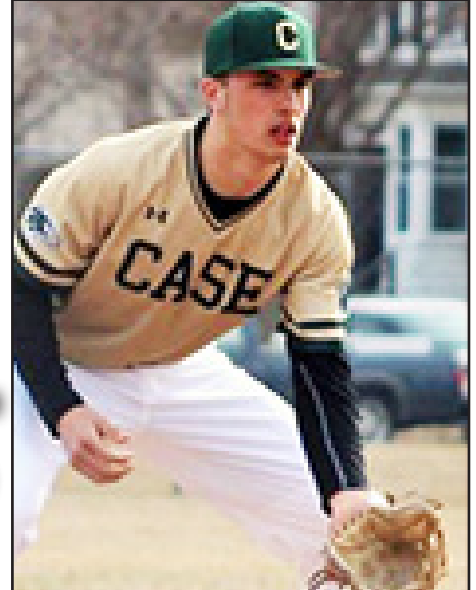

RACINE CASE EAGLES

COLTON COCA
11



COLTON COCA
RACINE CASE EAGLES
6'4" • 215 LBS • R/R
INFIELDER
SCHOOL ENROLLMENT: 1800
WBCA HIGH SCHOOL COACH: FRANK JARAMILLO
PLANS: CENTRAL MICHIGAN

.517 AVG, 29 RBI, 4 HR, 8 SB, 20 RUNS SCORED
FIRST TEAM ALL CONFERENCE




OAK CREEK KNIGHTS

(Photo: Wm. Glasheen/USA TODAY NETWORK-Wisconsin)
GUNNAR DOYLE
24

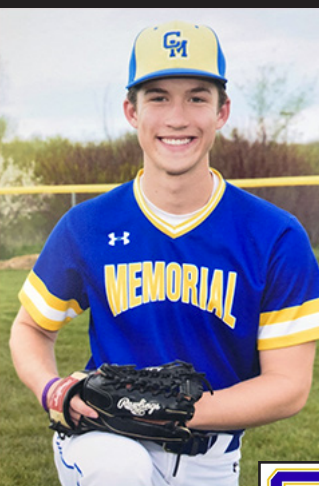


GUNNAR DOYLE
OAK CREEK KNIGHTS
6'0" • 185 LBS • L/R
OUTFIELDER
SCHOOL ENROLLMENT: 2142
WBCA HIGH SCHOOL COACH: SCOTT HOLLER
PLANS: MADISON COLLEGE

.462 AVG, 31 RBI, 3 HR, 17 SB, 30 RUNS SCORED
FIRST TEAM ALL CONFERENCE




2020 WBCA EAST ALL-STARS



CATHOLIC MEMORIAL CRUSADERS

LUKE FOX
8



LUKE FOX
CATHOLIC MEMORIAL CRUSADERS
6'1" • 185 LBS • L/L
 PITCHER
 SCHOOL ENROLLMENT: 589
 WBCA HIGH SCHOOL COACH: SEAN SMITH
 PLANS: DUKE

.360 AVG, 22 RBI, 5 HR, 31 RUNS SCORED
5-1, 1.00 ERA, 32 IP, 45 K, 11 BB
HONORABLE MENTION ALL STATE AS A JUNIOR




RANDOM LAKE RAMS

BLAKE HALL
5



BLAKE HALL
RANDOM LAKE RAMS
6'3" • 195 LBS • L/R
 INFILDER
 SCHOOL ENROLLMENT: 252
 WBCA HIGH SCHOOL COACH: MIKE DONAHUE
 PLANS: MSOE

.438 AVG, 19 RBI, 2 HR, 11 SB, 38 RUNS SCORED
BIG EAST CONFERENCE PLAYER OF THE YEAR




WEST BEND WEST SPARTANS

GAVIN HINCKLEY
15



GAVIN HINCKLEY
WEST BEND WEST SPARTANS
6'2" • 160 LBS • R/R
 PITCHER
 SCHOOL ENROLLMENT: 1204
 WBCA HIGH SCHOOL COACH: DAN D'AMICO
 PLANS: INDIAN HILLS COMMUNITY COLLEGE

2019: 5-2, 1.72 ERA, 71 K, 34 BB
CAREER: 17-2, 2.06 ERA, 124 IP, 132 K



2020 WBCA EAST ALL-STARS



GRAFTON BLACK HAWKS

TOMMY LAMB
10



TOMMY LAMB
GRAFTON BLACK HAWKS
6'0" • 170 LBS • L/L
PITCHER
SCHOOL ENROLLMENT: 729
WBCA HIGH SCHOOL COACH: BRIAN DURST
PLANS: OKLAHOMA
6-1, 1.13 ERA AS A JUNIOR, OKLAHOMA
COMMIT 2ND RANKED PITCHER IN WISCONSIN
BY PBR.



LAKE COUNTRY LUTHERAN LIGHTNING

JACK LEVERENZ
4



JACK LEVERENZ
LAKE COUNTRY LUTHERAN LIGHTNING
6'0" • 210 LBS • L/L
OUTFIELDER
SCHOOL ENROLLMENT: 373
WBCA HIGH SCHOOL COACH: DAVID BAHR
PLANS: INDIANA KOKOMO
.442 AVG, 30 RBI, 3 HR, 5 SB, 22 RUNS SCORED
4-2, 2.10 ERA, 36.2 IP, 32 K, 19 BB
ALL CONFERENCE

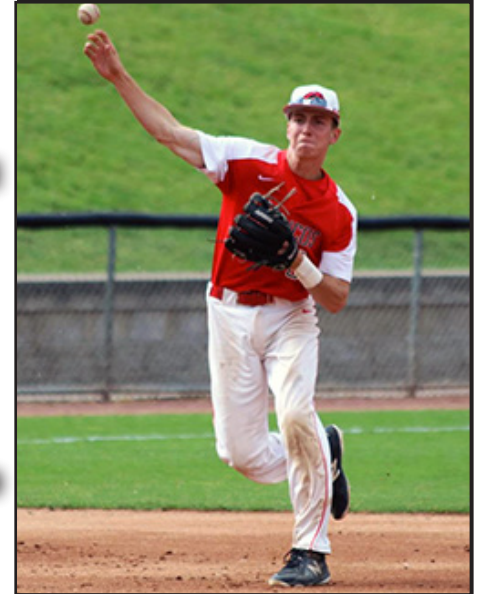


UNION GROVE BRONCOS


TJ MANTUEFEL
8



TJ MANTUEFEL
UNION GROVE BRONCOS
6'1" • 175 LBS • R/R
INFIELDER
SCHOOL ENROLLMENT: 986
WBCA HIGH SCHOOL COACH: NATE MEYER
PLANS: BRADLEY UNIVERSITY
.402 AVG, 36 RBI, 7 HR, 16 SB, 40 RUNS SCORED
FIRST TEAM ALL DISTRICT




2020 WBCA EAST ALL-STARS



FRANKLIN SABRES

BRUCE MILLER
8



BRUCE MILLER
FRANKLIN SABRES
6'2" • 200 LBS • R/R
CATCHER
SCHOOL ENROLLMENT: 1539
WBCA HIGH SCHOOL COACH: STEVE DROBOT
PLANS: JEFFERSON COLLEGE

.366 AVG, 24 RBI, 3 HR, 19 RUNS SCORED IN 2019



WAUKESHA WEST WOLVERINES

AVERY OWUSU-ASIEDA
6



AVERY OWUSU-ASIEDA
WAUKESHA WEST WOLVERINES
6'4" • 210 LBS • R/R
OUTFIELDER
SCHOOL ENROLLMENT: 1178
WBCA HIGH SCHOOL COACH: CHAD MONTEZ
PLANS: SOUTHERN ILLINOIS
.296 AVG, 17 RBI, 1 HR, 18 RUNS SCORED
TEAM CAPTAIN & GOLD GLOVE



WHITEFISH BAY BLUE DUKES

EVAN PROVANCHER
8



EVAN PROVANCHER
WHITEFISH BAY BLUE DUKES
6'3" • 185 LBS • R/R
PITCHER
SCHOOL ENROLLMENT: 959
WBCA HIGH SCHOOL COACH: JAY WOJCINSKI
PLANS: WISCONSIN

10-1 IN 2019, 0.84 ERA, 62K IN 58.1 IP
17-4 CAREER RECORD, CAREER 1.52 ERA.



2020 WBCA EAST ALL-STARS



WILMOT UNION PANTHERS


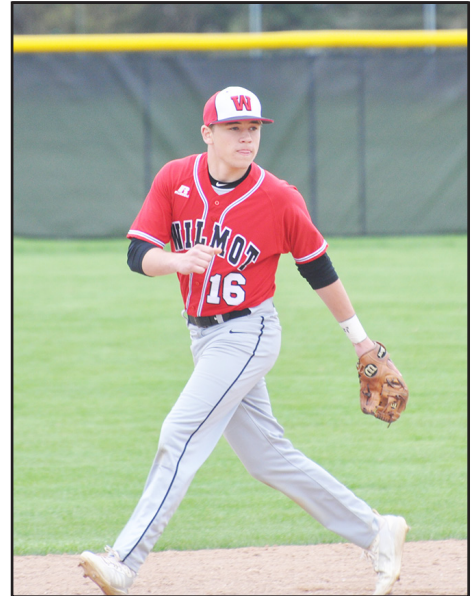
LOGAN PYE
16



**LOGAN
PYE**


WILMOT UNION PANTHERS
5'10" • 170 LBS • R/R
INFILDER
SCHOOL ENROLLMENT: 1042
WBCA HIGH SCHOOL COACH: JOSH PYE
PLANS: UW-LA CROSSE

.313 AVG, 18 RBI, 6 SB, 22 RUNS SCORED
ALL CONFERENCE 2019



PIUS XI CATHOLIC POPES


REYSHAWN SPREWER
12



**REYSHAWN
SPREWER**


PIUS XI CATHOLIC POPES
5'10" • 160 LBS • L/L
OUTFIELDER
SCHOOL ENROLLMENT: 758
WBCA HIGH SCHOOL COACH: KEVIN KEHOSS
PLANS: UW-WHITEWATER

.508 AVG, 15 RBI, 25 SB, 23 RUNS SCORED
FIRST TEAM ALL CONFERENCE



CATHOLIC CENTRAL HILLTOPPERS

TYLER SWANSON
2



**TYLER
SWANSON**

CATHOLIC CENTRAL HILLTOPPERS
5'10" • 185 LBS • R/R
INFILDER
SCHOOL ENROLLMENT: 136
WBCA HIGH SCHOOL COACH: JIM FRIEND
PLANS: EVANSILLE UNIVERSITY

..485 AVG, 20 RBI, 24 SB, 24 RUNS SCORED
SECOND TEAM ALL CONFERENCE

