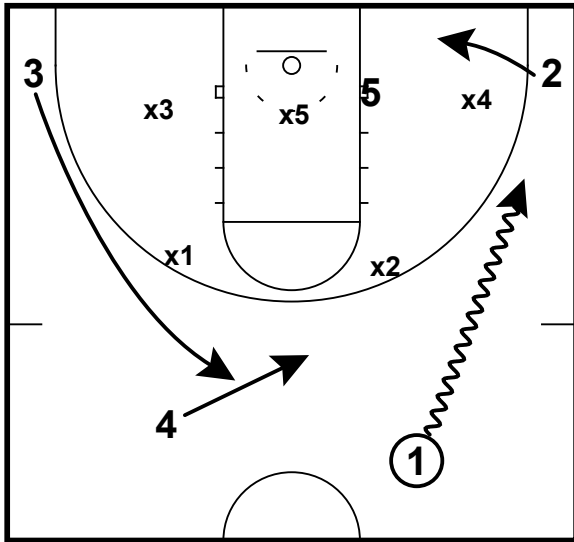


Push 2 Action
2018-19 Season

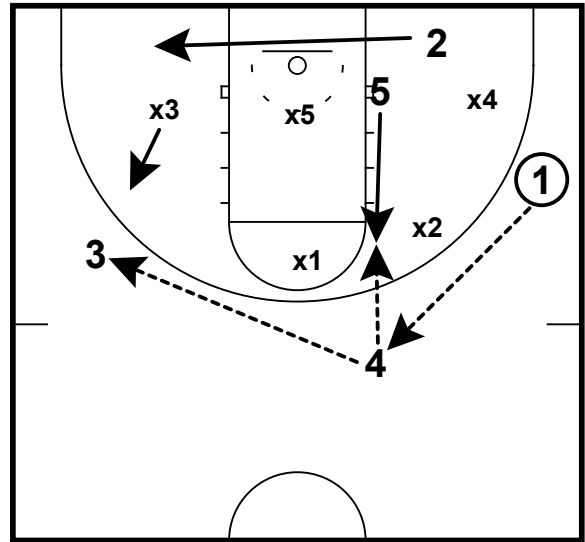


Push action that flows in to our 1-3-1 continuity.

As 1 pushes 2 thru, 2 should hesitate in the short corner in case x4 tries to bump up early.

4 moves to replace 1 as 3 slides up to the left side wing.

Push 2 Action
2018-19 Season

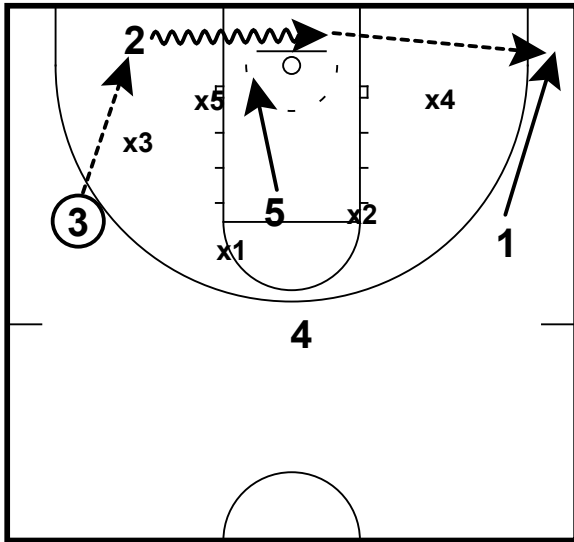


After 1 drags x2 to the wing they, should read x1 to make a high post pass or swing back to 4.

On the catch by 4, our 5 tries to beat x2 to the high post area for a possible entry pass. If not immediately open, 4 MUST freeze x1 to force x3 to defend the pass to 3 on the wing.

3 now should have a shot or attack advantage or an open short corner entry to 2 that originally pushed thru.

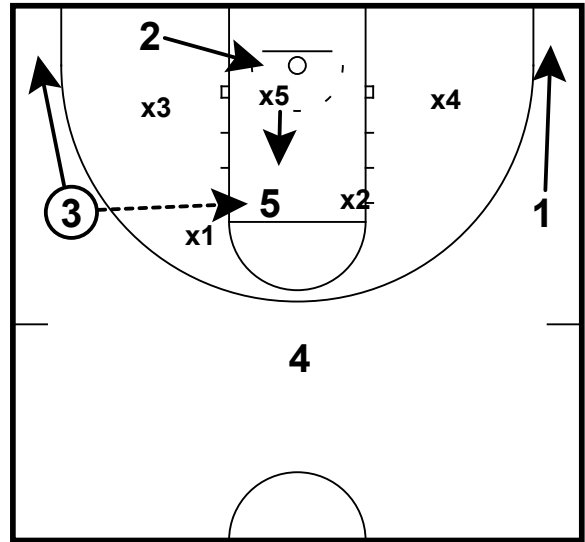
Push 2 Action
2018-19 Season



On any pass to the short corner, our options are to pass to the high post diving to the rim or to attack the baseline.

On a baseline drive, 1 should fill the weak-side corner to receive a drift pass if 2 can not score.

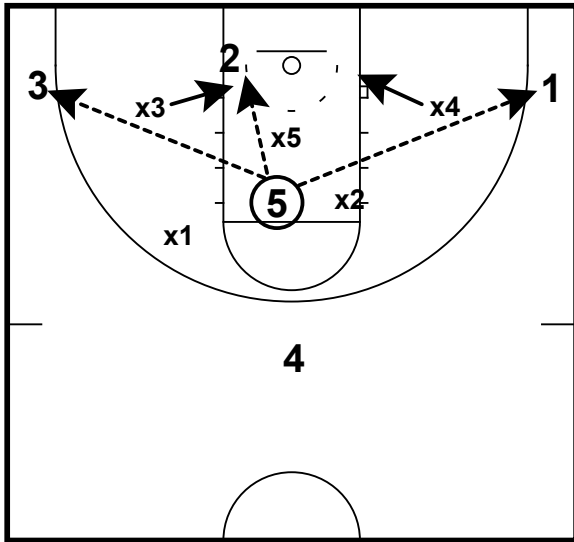
Push 2 Action
2018-19 Season



On a high-post catch, the player in the short-corner (2) dives to the rim looking for a pass from 5.

Also on the high-post catch, our wings (3 and 1) flood the baseline to create a 3v2 situation for 5 to make a play with.

Push 2 Action
2018-19 Season



5's passing options:

- Short-Corner Dive
- Corner 3's