

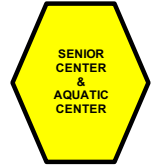


# Southern Nevada Soccer Association



## HERITAGE PARK FIELD LAYOUT MAP

BURKHOLDER BLVD.



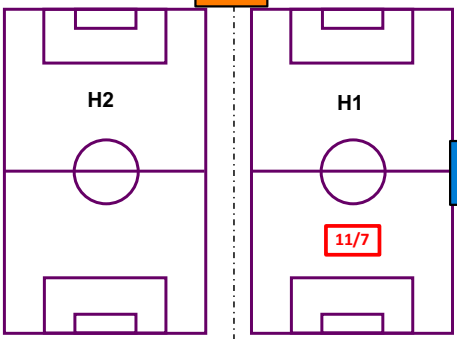
### PARKING

RESTROOM

SPARKS Field 1 Check-in

**SPARKS ACADEMY CHECK-IN INSTRUCTIONS**

- Session dates are listed on each field.
- All players report to the check-in tent as designated on this map for a temperature check & healthy survey.
- Checked-in players will receive a wrist band to enter the field.
- Players must wear a mask at all times when not actively participating on the field.
- Due to capacity restrictions, no parents/spectators will be allowed on the field. Parents may watch from outside the fence and need to wear a face mask.
- Players need to exit the field as designated on map. Please do not congregate near entry/exit gates!

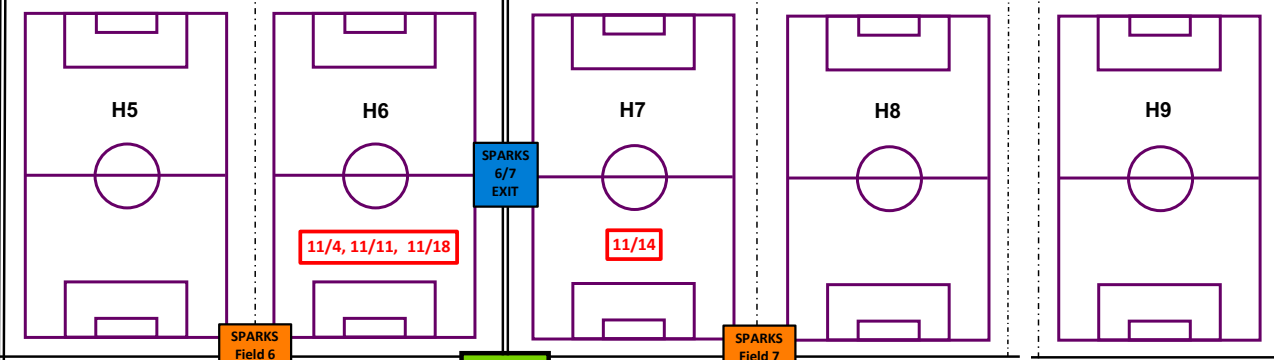


CONCESSIONS & RESTROOMS

SPARKS 1 EXIT

ENTRANCE

RACETRACK RD.



SPARKS 6/7 EXIT

SPARKS Field 6 Check-in

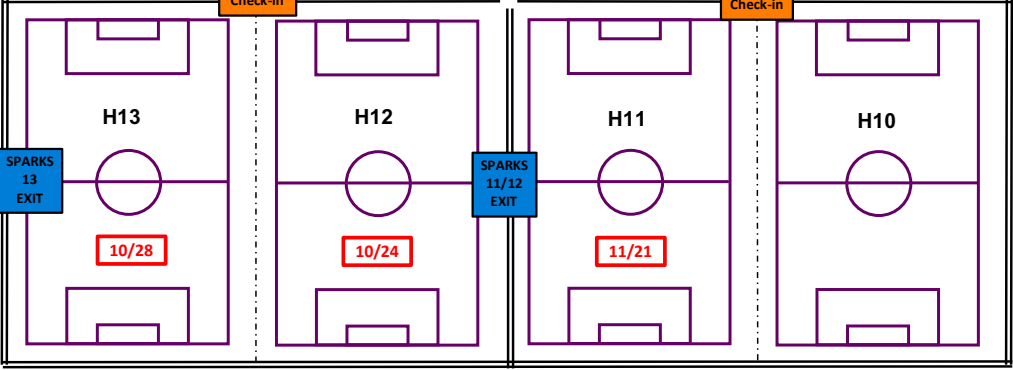
RESTROOM

SPARKS Field 7 Check-in

### PARKING

SPARKS Field 12/13 Check-in

SPARKS Field 11 Check-in



SPARKS 13 EXIT

SPARKS 11/12 EXIT

NEWPORT DRIVE

