



2021 4/5 Year Old – T-Ball Division

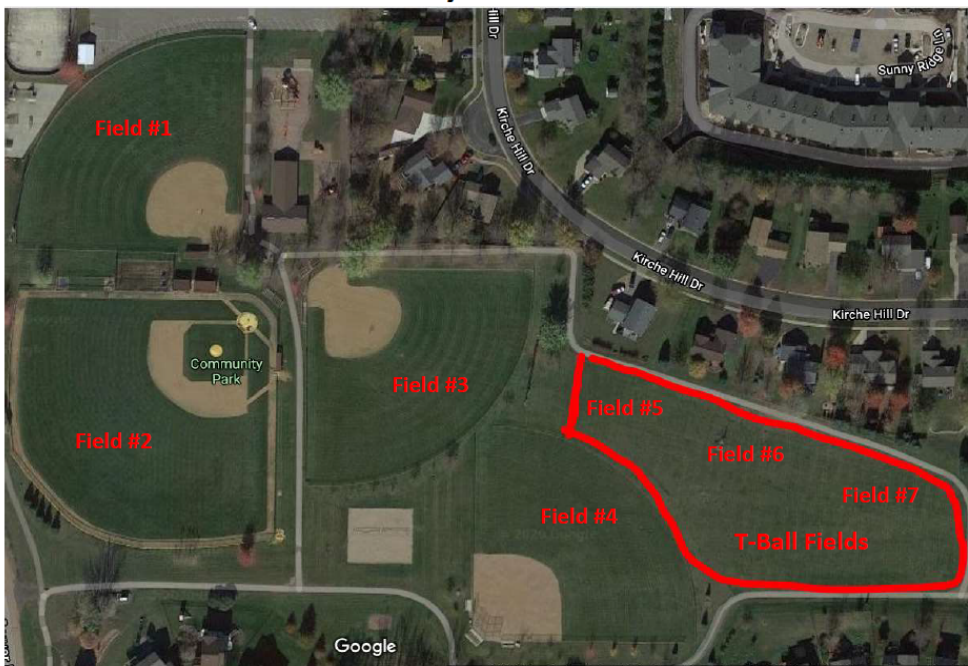
GOALS:

- Ensure that the experience is positive and fun for all players.
- Teach the basic fundamentals of baseball/softball and build player confidence.
- Concentration on fielding, throwing, and hitting. NOT SCORE OF THE GAME

KEY NOTES TO PROGRAM:

- 2 Teams share a field during their assigned time to play
- The fields for play are located in the grassy area East of Community Park, which constitutes as Field #5, Field #6 & Field #7 (see below)
- 2 Teams will share an equipment bag; there will be 1 equipment bag per field.
- The “Home” Coaches for the first time session on the field to play, will be responsible for bringing the equipment bag to the field from the equipment/storage room by the concession stand. The “Home” Coaches for the second time session on the field to play, will be responsible for bringing the equipment bag back to the equipment/storage room by the concession stand to put away for the night.

Carver Community Park – Field Locations



COACHES RESPONSIBILITIES:

- Only league approved coaches are permitted on the “field of play”. Parents can help coach from the bench but are not allowed to coach on the field of play. (Insurance Company Requirement).
- Ensure all players get equal participation at each position (provided the player is able to play all positions safely), providing attention and learning opportunities for all players.
- Maintain equipment throughout the season and ensure prompt return at the end of the season.
- Bring first aid kits, rules, and emergency information to all sessions.
- Follow all the rules listed below.
- Be a good role model and treat all Players and Parents with respect.

PROVIDED EQUIPMENT:

(1 Bag per Field; 2 Teams sharing a bag)

- Tee
- Bats
- Helmets
- Dozen “Softie” Balls & Dozen Tennis Balls
- Throw Down Bases

PROGRAM EMPHASIS:

- The program emphasis for the 4/5 Yr Old T-Ball program is for those players who are up to bat, to get players to swing a bat properly while hitting off of a tee and to be familiar with running to 1st base (the correct way running around the bases) after hitting the ball.
- The program emphasis for the 4/5 Yr Old T-Ball program is for those players who are in the field, to get players to field the ball and make an attempt to throw to first base to make the most common Force Out.
- 2 Teams will be sharing a field during their scheduled time of play. The first 20-25 minutes of play should be allocated to the individual team to “practice” throwing, fielding, etc. The remaining amount of time allowed for your assigned field, can go towards playing a game against the other team.

RULES OF PLAY:

1. General:

- All participants (including parents) are to refrain from using tobacco, alcohol, foul language or unsportsmanlike conduct in games or practices. Coaches will ask the offending person to leave the field immediately.
- 2 Teams will share a field during their assigned time of play.
- During assigned time on the field, the first 20-25 minutes should be individual team time working on fundamentals such as throwing, fielding, etc. Game play will consist of the remaining amount of time that is allowed within your scheduled field time slot, roughly 30-40 minutes. Any “Innings” in progress when assigned field time comes to an end must be completed right away.
- A batter should get an unlimited amount of swings to make a connection with the ball on the tee to hit the ball. If a player needs help or assistance is needed by a coach to swing the bat, this may be allowed.
- A half an “inning” of play consists when every player has batted once, through the line-up. After this occurs, teams will switch positions (batters go to the field and fielders go to bat).
- Equal playing time for ALL players regardless of ability.
- The batting order may change from inning to inning if the coach desires to change the batting

order. If this does not occur, then the next game the batting order needs to be different from the previous night of play.

- NO Bunting.
- At any sign of weather conditions, darkness, or other natural or man-made condition that places the players at risk the game will be called. Any sign of lightning, no matter how distant, the game must be suspended until there is no lightning activity for 30 minutes. A decision to suspend or terminate a game is at discretion of the coaches. A called game will be considered complete, regardless of # of innings completed.
- League wide rainouts will be posted on our web site or email sent to coaches by 4:00PM.

2. Players and Positions:

- Teams may play all of their players in the field and place players in baseball positions as coaches see fit.
- Batting order could be continuous throughout the game to ensure, as best as possible, all players get an equal number of times to the plate.
- A player that arrives any time after the start of the game must be added to the BOTTOM of the batting order regardless of their original batting position.
- Even though there are no Outs per each half inning, players should still continue to work on making a "Force Out" by throwing to 1st base when a batted ball is placed into play.

3. Base running:

- Runners may only run one base at a time.
- Runners can only advance to the next base on batted balls.
- A base runner must remain on their base until the pitched ball is struck by the batter. Only one warning per team each game for leading off before the ball crosses the plate.
- NO stealing
- NO advances on overthrows. We are concentrating on fielding, throwing, and hitting.
- Advancing runners must stop when fielding team gains "Control" of the ball on the infield by one of the "infield players" (unless a runner is forced to run to their base by the batted ball).
- Head first slides are not permitted at any time.
- The last batter to bat the line-up for the team for the inning, should bat and run around the bases as a "Home Run" to clear the bases.

4. Mandatory, Illegal and Optional Equipment:

- No player will bat without a helmet.
- No metal spiked shoes. Rubber or plastic cleats are acceptable.
- Mouth guards are optional.
- Athletic supporters/cups are strongly recommended for a player's own safety.

5. Misc.:

- Unsportsmanlike conduct will not be tolerated at any time. Unsportsmanlike conduct includes but is not limited to:
 - a. Player or coach throwing equipment.
 - b. Coach sending base runners to take extra bases after being consulted by the opposing coach.
 - c. Coach not properly rotating players from infield to outfield (no warning needed)
 - d. Players arguing with officials or coaches.
- At the conclusion of the game, players should line up and shake the opposing teams player's hands and say "Good Game". In 2021 due to COVID protocols, players should only wave to each other and avoid shaking hands.