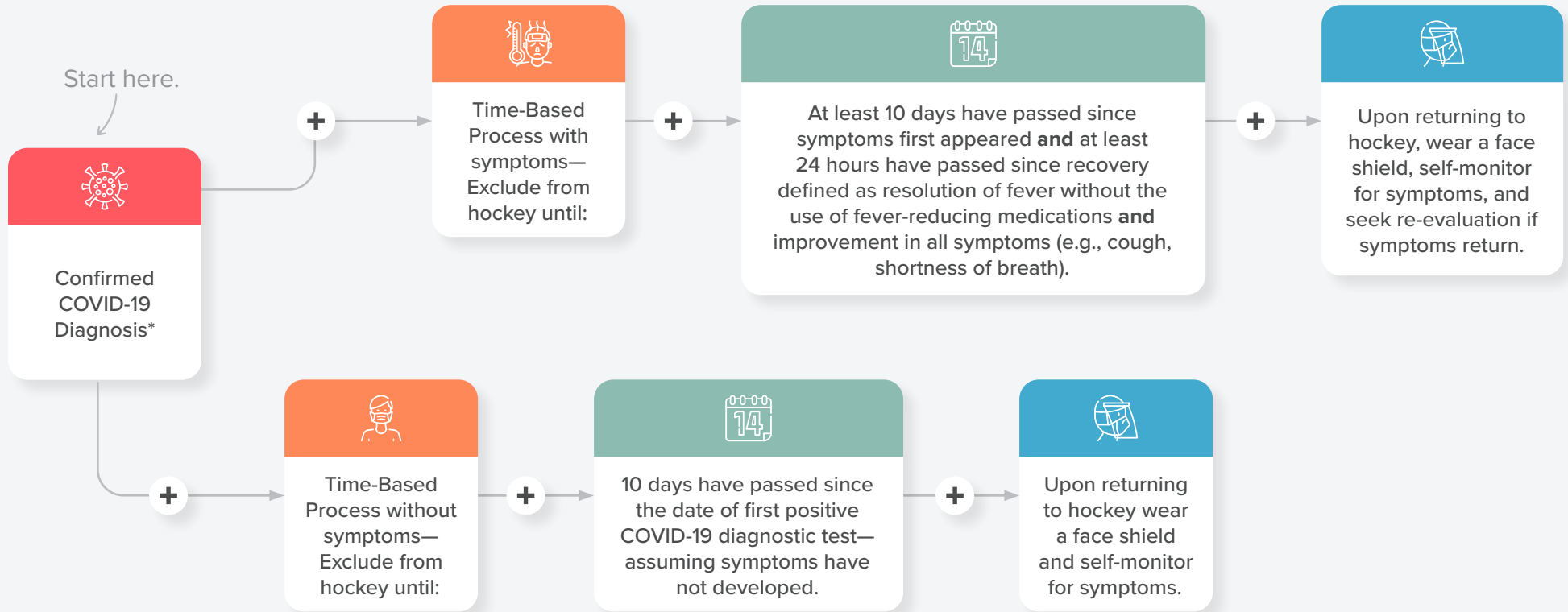


Have you tested positive for COVID-19?



*If you are living with someone with a confirmed positive test, assume you are positive and use the **Confirmed COVID-19 Diagnosis** flow chart.



Fever: Over 100.4 taken with two different thermometers.



Respiratory: New and concerning cough not related to acid reflux or chronic conditions like allergies or asthma.



Gastrointestinal: Systemic symptoms that are new and concerning not related to chronic conditions.



Loss of Taste/Smell: Return to hockey 10 days after loss of taste/smell as long as no other symptoms develop.