



# **MAHA District Evaluation Camps**

**USA Hockey National Player  
Development Program**

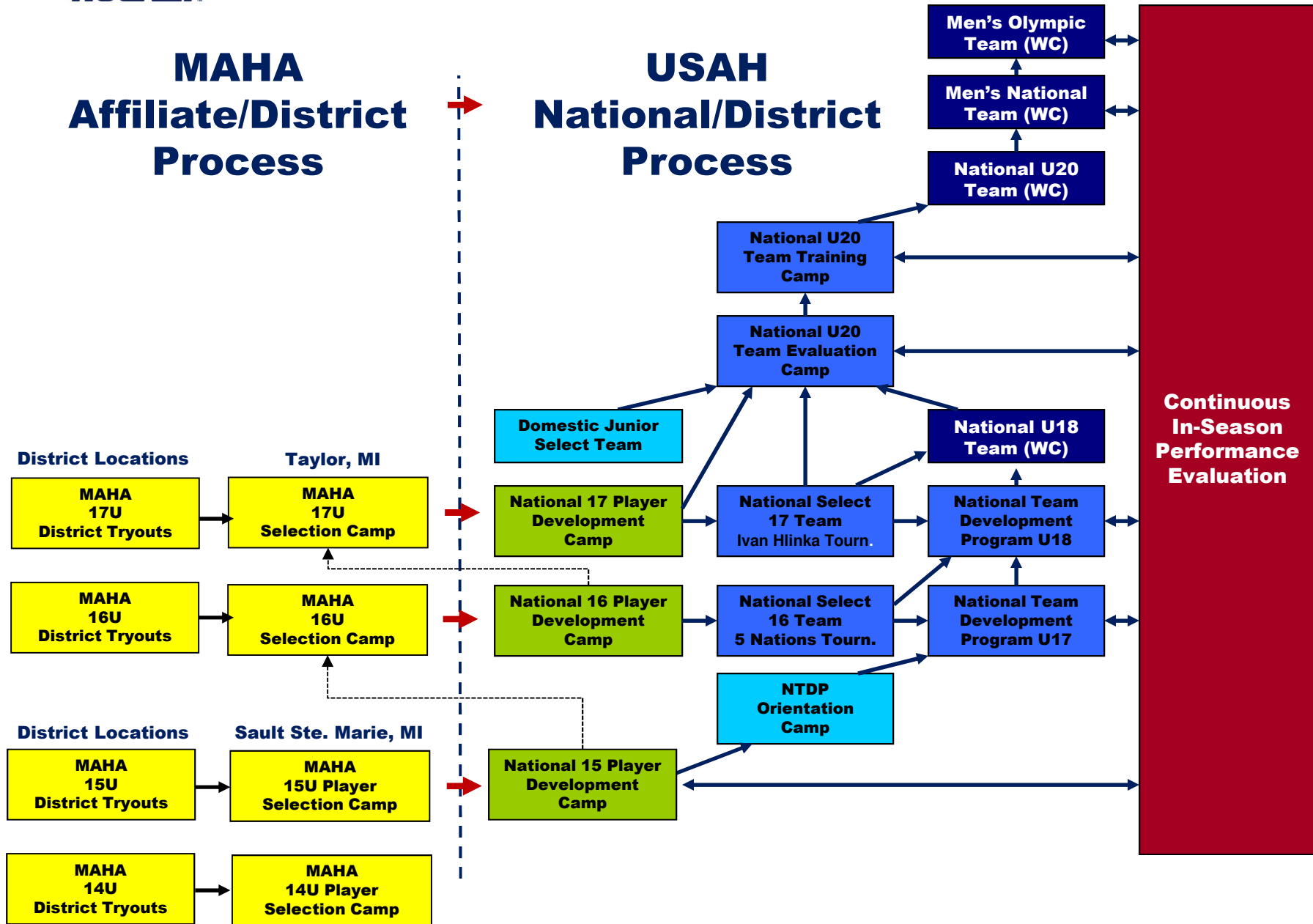


# **Purpose of State District Camps**

- **Start of process toward MAHA Player Selection**
- **Beginning of National Camp/Select Team selection process**
- **To give the players the opportunity to measure themselves against our District's other top players**
- **To train, educate, evaluate and identify our nation's best players**
- **To create camaraderie & respect between America's top players**



# National Team Progression





# **District Camp Format**

**D234 Dearborn | D567L Lansing | D7U8 Marquette**

- 4 ice sessions per team**
  - 80 minutes per session**
  - First 2 sessions**
    - 30-35 minutes Drills and SAG**
    - 45 minute mini game**
  - Last 2 sessions**
    - 3 – 15 minute stop time periods**
    - Referees will be instructed to officiate as a regular game**



# **District Camp Format**

**D234 Dearborn | D567L Lansing | D7U8 Marquette**

- Target is 8 teams\*\* per age group. This could change depending on number of registrations**
    - Each team will have a coach/evaluator assigned for the week**
    - One evaluator per age group will be designated as the lead evaluator**
    - Evaluators were chosen from different areas throughout the state and have extensive hockey backgrounds**
  - Target is 10 F, 6 D, and 2 G per team**
  - Teams are split as equally as possible**
- \*\* Number of teams varies by District Camp location**



# District Camp Format

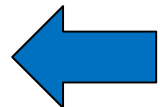
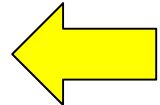
**D234 Dearborn | D567L Lansing | D7U8 Marquette**

- **Each position will be ranked each game and an average ranking calculated for each player**
- **At the conclusion of camp, evaluators will be responsible for determining list of players selected for the next round**
  - **Force ranking will be done at midpoint of camp and then a final ranking will be done to determine players moving to next level (see next slide for example)**
- **2005 and 2004 will go to LSSU in June**
- **2003 and 2002 will go to Taylor May**



# Example of Force Rank

Initial Rank / Jer. #	Player Position	Coach 1	Coach 2	Coach 3	Coach 4	Coach 1	Coach 2	Coach 3	Coach 4	Coach 1	Coach 2	Coach 3	Coach 4	Coach 1	Coach 2	Coach 3	Coach 4	Avg	Final Rank					
11	F	3	1	1						3	1	1		1	1			1	1	1	1	1.364	11	
12	F	2	2			1	2							1								1.429	12	
9	F	1	1			1		2	1					2				1	1	3		1.444	9	
11	F	1	1			2	1							2				2		2		1.571	10	
10	F	1		2	1			1		1				4	1	1				4	1	1	1.636	9
9	F	1	1	2				1	1	2				1				4		2	2	1.700	10	
13	F	2	2			2		1	2					1				3	2	1		1.778	13	
10	F	1	3	2				2	2	3				4	4					2	2	2	2.455	11
10	F	3		4	1			1	3	1				4	3			1		5	1	2.455	10	
10	F	7	4	1				4	1					3				1		1	1	2.556	10	
14	F	4	2	3				1	5	2				5	2					3	4	3	3.091	14
11	F	2	3	3				3	5					4				2		4	3	3.222	11	
13	F	2		1	2			2	5	2				7	6			5		2	2	3.273	13	
14	F	3	3					3	3					6						3	3	3.429	14	
14	F	3	3					3	4	3				4				4	3	5		3.556	14	





# **Example of Force Rank**

- In this example, players ranked 1-3 remained the same, but player ranked 5 (yellow 10) was moved up to 4 (see yellow Arrow on previous slide)**
- Player initially ranked 4 ended up being moved down to 8 after force ranking is done (see blue Arrow on previous slide). Essentially, evaluators all agreed that there were 7 players better than him**
- In order for a player to move during forced rankings, the MAJORITY of evaluators have to agree**
- This is the format followed at National Camp**



# Important Notes

- **This camp is a SELECTION camp, not an development camp**
- **Coaches/evaluators are tasked with identifying the players to move to the next round**
- **Player evaluations WILL NOT be given at the end of the camp**
- **The players selected to move to the next round will be the ones who were determined through this process to be the most deserving**
- **Players that are invited to National Camps at 15/16 levels are automatically invited to 16/17 MAHA Selection Camps in Taylor the following year**



# Budget

**Where does your registration fee go?**

- **Ice**
- **Referees**
- **Scorekeepers**
- **Jerseys**
- **Registration cost**
- **Evaluator stipend**