

**BRIGHTON**



**LACROSSE**

Parent Meeting – March 2021

# AGENDA

- ❑ Brighton Youth Boys Lacrosse (BYBLAX)
- ❑ Program & Season
- ❑ Safety
- ❑ Covid-19
- ❑ Apparel
- ❑ Closing Remarks

## □ “Community Focused” organization

- Accessible to all kids
- Volunteer led

- Board of Directors

President	Dan Hutcheson
Vice President	Matt Kato
Treasurer	Abby Cooper
Secretary	<b>OPEN</b>
Membership/Social Media	Kristin Blake-Thomas
Marketing/Apparel	Dawn Flowers
Safety Director	Kevin Komar
Equipment Director	Justin Buchhop
Tournament Director	Dennis Freimark

- 20+ Volunteer Coaches
- Closely tied to HS program (BHS Varsity Coach – Jim Carl)

# BOARD POSITIONS

	2020 (Jul '19 - Jun '20)	2021 (Jul '20 - Jun '21)	2022 (Jul '21 - Jul '22)	2023 (Jul '22 - Jul '23)
<b>Appointed Officers</b>				
President	Dan Hutcheson	Dan Hutcheson (7th)	Dan Hutcheson (8th)	OPEN
Vice President of Lacrosse	Matt Kato	Matt Kato (8th)	Kevin Komar (6th)	Kevin Komar (7th)
Treasurer	Abby Cooper	Abby Cooper (8th)	OPEN	OPEN
Secretary	Michelle Mostek	OPEN	OPEN	OPEN
<b>Appointed Members</b>				
Membership/Communications/Social Media	Greg Giles	Kristin Blake-Thomas (8th)	OPEN	OPEN
Health & Safety	Kevin Komar	Kevin Komar (5th)	OPEN	OPEN
Equipment	Dan Stark	Justin Buchhop (7th)	Justin Buchhop (8th)	OPEN
Apparel/Uniforms & Marketing	Hilary Feister-Bell	Dawn Flowers (6th)	Dawn Flowers (7th)	Dawn Flowers (8th)
Tournament Director	Kristin Blake-Thomas	Dennis Freimark (6th)	Dennis Freimark (7th)	Dennis Freimark (8th)
BHS Varsity Coach	Jim Carl	Jim Carl	Jim Carl	Jim Carl
10U Commissioner				
12U Commissioner				
14U Commissioner				
At Large Members (if board < 10)				

## ❑ Building & leveraging the Brighton LAX community

- HS boys & girls coaching staffs work closely together
- HS staff helps align the vision of BYBLAX & continues to seek opportunities to support the program
- HS players encouraged to engage with BYBLAX

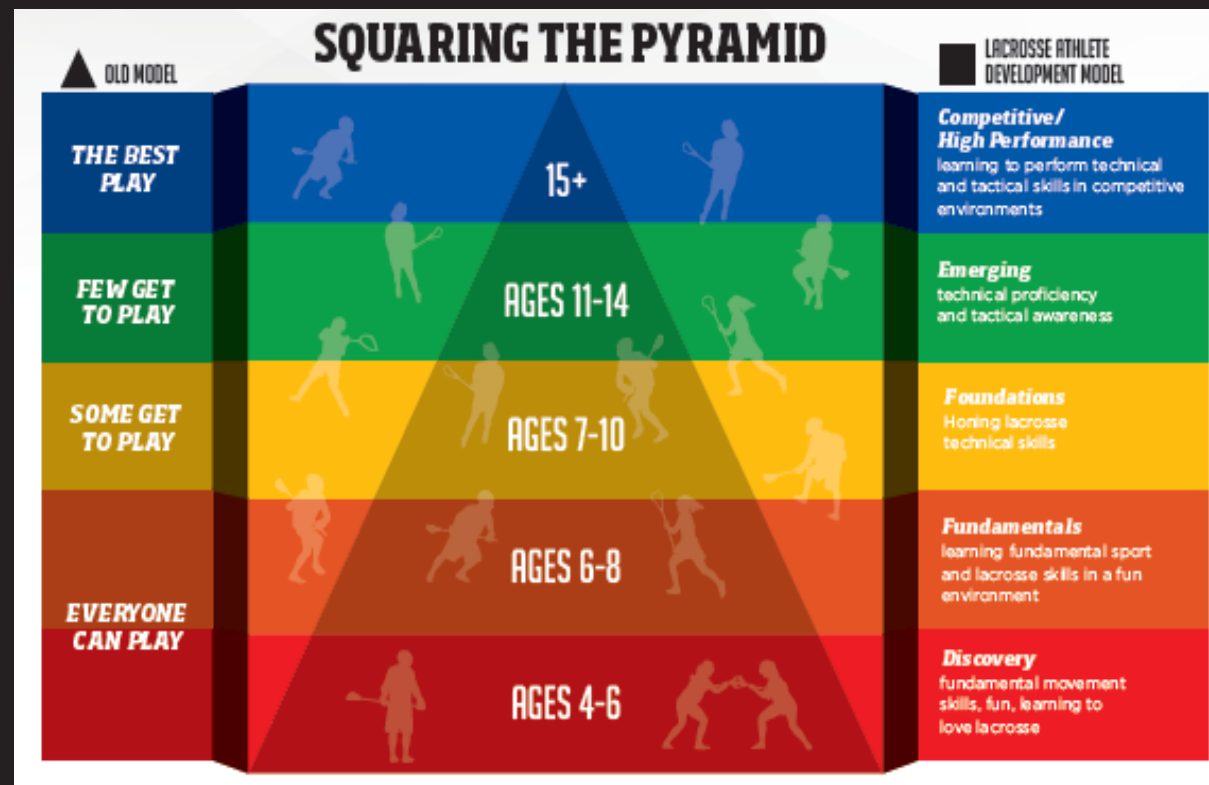
## ❑ Maintaining a “balanced” perspective

- Keep LAX a fun & formative experience in the development of our youth
- Keep an age appropriate balance of activity which encourages multi-sport participation
- Set the foundation so that our youth remain engaged in LAX

## US Lacrosse Athlete Development Model (ADM) CORE VALUES

- Designed for development
- Fun and kid-centered
- Small-sided competition & free play
- Coach training
- Physical literacy
- Multi-sport participation

70% of kids quit sports  
by age 13 because it's  
not "fun"



### ❑ Metro West league

- Brighton, Howell, Hartland, South Lyon, Northville, Canton, Ann Arbor, Saline
- Home games are played at Scranton (Apr 17, May 1, May 8, May 22) or BHS stadium (Apr 24)

### ❑ 2021 spring teams – outdoor practices starts Apr 7 (Maltby), first game Apr 17

- 8U            ~2 games + 1 tourney (possible)    Practice M/W
- 10U           ~7 games + 3 tourneys                    Practice M/W/F
- 12U           ~7 games + 3 tourneys                    Practice M/W/F
- 14U           ~7 games + 3 tourneys                    Practice M/W/F

*\*Schedule to be finalized by mid-March*

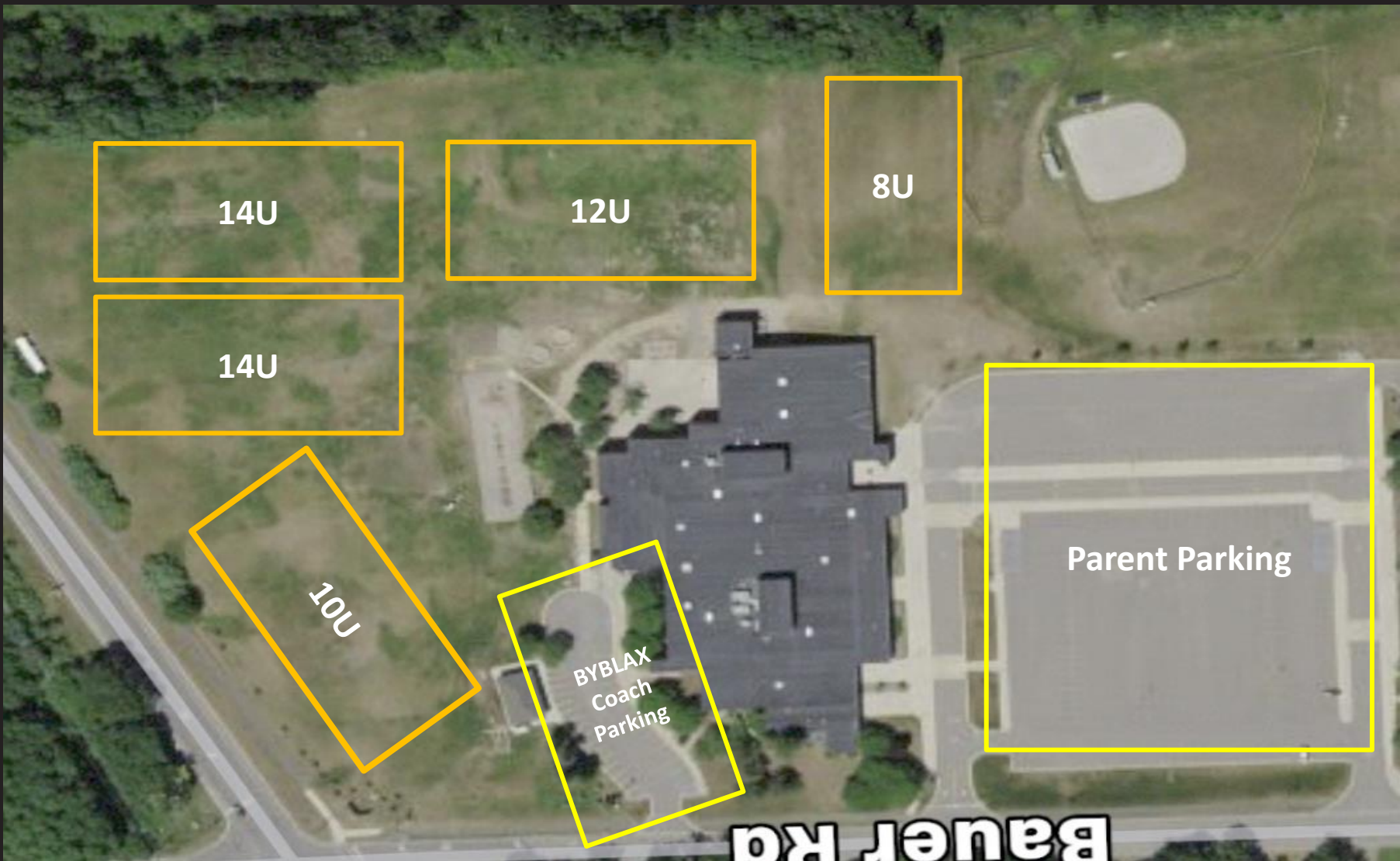
### ❑ Tournaments

- Eagle Jam - Hartland (May 2)
- Fresh Coast Festival – St. Joseph (May 15/16) **OR** LaxZing – Lansing (May15/16)
- Midwest Lax Bash - Oxford (Jun 5/6; may include 8U)

*\*All teams are registered for the same tournaments & we try to coordinate w/ girls lax*



# Practice Field Map



## ❑ Player requirements

- US Lacrosse membership
- Full equipment at all times on the field (practice/games)
- Health Questionnaire Form & Physical, submit via email to [byblacrosse@gmail.com](mailto:byblacrosse@gmail.com)
  - *New physicals are NOT required if:*
    - *Your player had an athletic physical for the 2019/2020 school year*
    - *There are no health changes or concerns*

## ❑ Coaching requirements

- US Lacrosse membership (coach)
- NCIS background check
- SafeSport training (US Lacrosse)

## ❑ Safety at all times

- Club philosophy is to never compromise player safety
- Coaches will follow the established weather policy to determine unsafe conditions



## ❑ BYBLAX

- Aligned to MHSAA & Brighton Area Schools guidelines

## ❑ Player requirements

- Remain home if exhibiting symptoms (follow school policy)
- Quarantine if positive or in close contact (follow school policy)
- Mask/gaiter required
- Social distance to the extent practical

## ❑ Coaching requirements

- Remain home if exhibiting symptoms (follow school policy)
- Quarantine if positive or in close contact (follow school policy)
- Mask/gaiter required
- Social distance to the extent practical
- Assign players to practice groups to the extent practical

## ❑ Parent requirements

- Mask/gaiter required when near players/coaches/fields
- Strick adherence to Health Dept/BAS group gathering requirements
- 8U/10U – drop-off & pick-up player at practice field (1 parent)
- 12U/14U – drop-off & pick-up player in upper Maltby parking lot

*\*Covid-19 protocols are posted on [www.brightonlacrosse.org](http://www.brightonlacrosse.org)*



## ❑ High quality pinnie

- Reversible for easy home & away designation
- Cut of pinnie makes multiple season use more likely
- Uniforms distributed at a practice the week prior to the first game

## ❑ Sizing at KVV

- Ensure individual fitment

## ❑ Shooter shirt & “spirit wear”

- Anticipated delivery mid-April, apparel pick will be at Maltby during a practice

BRIGHTON



LACROSSE

*Thank You!*