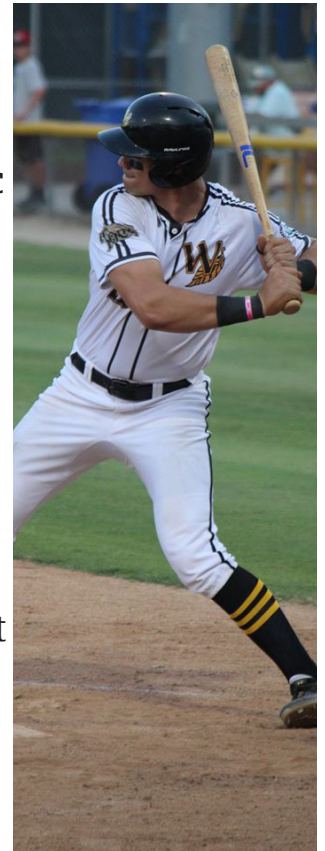


COVID-19 Readiness Guide



Everyone will be instructed to follow the required guidelines:

- Historic Fleming Stadium is able to function at a capacity that allows all events to be open to the public
 - With that said all in attendance must still abide by social distancing and mask requirements
- We ask fans to sit on the team's side that you are cheering for, maintain social distancing, and avoid large crowd gatherings
- Everyone in the facility must wear a face mask in the following areas:
 - Areas with large crowd gatherings
 - Inside facility buildings
- As an outside venue face masks are recommended but not required
- Hand sanitizer dispensers will be set up at the ballpark at multiple locations
- These policies may be updated at any time due to changes in governmental restrictions



Guests voluntarily assume all risks and danger incidental to the game or event for which they are attending, whether occurring prior to, during or after the event including the danger of being exposed to or contracting any form or strain of CORONAVIRUS, any other communicable disease, condition or malady however defined. The guest agrees that the Wilson Tobs Baseball Club, the Coastal Plain League, the City of Wilson, and other affiliated organizations are not liable for any personal injuries, illness, or property damage resulting from such causes.